

Confidential

Price Book PB-34

For G&W Electric Use Only
Subject to change without notice

Table of Contents

Section		Page
Frequently Asked Questions		3
Discount Schedule		4
Section CA1: Cable Terminations (15- 46kV)		
CA1-31	Slip-On Terminations Price Worksheet	5
CA1-31	Slip-On Terminations	6
CA1-51	Capnut Terminations Price Worksheet	12
CA1-51	Capnut Terminations	13
CA1-61	Sodertite Terminations Price Worksheet	28
CA1-61	Sodertite Terminations	29
Section CA2: Cable Splicing (5- 34.5kV)		
CA2-21	Tape Splice Kits	37
CA2-31	Splice Boxes	39
Section CA3: High Voltage Cable Terminations (69kV and above)		
CA3-01	ATA/ATL Terminations Price Worksheet	40
CA3-01	ATA/ATL Terminations	41

Frequently Asked Questions

When can I use the price book?

The price book is a tool that can be utilized to quote low-voltage cable accessories (LVCA) in your territory. If the end user is not in your territory or if the customer needs a special validity, please enter quote request in Sales Force.

How do I determine price?

The quoted price is determined by multiplying the list price by the multiplier. The multipliers are in the Discount Schedule section of the price book. If the customer is a distributor, an additional 5% discount can be applied.

Eg. If the customer requires an E5201-BE-001S-WNO-3, the prices for each segment and the multiplier are located in the price book. The following equation is used:
 $(\$228 + \$0 + \$67 + \$205 + \$195) * .67 = X$. The final price comes to \$465.65. If the customer is a distributor an additional 5% discount applies by dividing by 1.05, which results in final price to \$443.33.

What is the lead time?

Once a month, the Application Engineering Manager sends out a marketing update with the published lead times. The published lead time can be used as a standard for quantities under 12. If lead time is critical or if the quantity is greater than 12, please send a lead time request to the Application Engineer.

The price book says consult factory (C.F.) instead of a list price. how do I proceed?

When the price book says consult factory, provide all required quote information in a Salesforce Quote Request. With terminations, the Application Engineer can either quote just the termination or the termination with all components. If all components are required, the rep must provide cable information and/or the customer's component selection when multiple options are available (i.e. aerial lug, stress cone materials, entrance housing).

What needs to be submitted with the PO at time of order?

Along with the standard information that is submitted at time of order, when the price book is used, include calculations showing how the sell price was derived. For all cable accessory orders requiring cable sensitive items, cable cut/data sheets with tolerances are required.

What supplemental information is available on the LVCA products?

All LVCA products have a catalog that is the best resource for information. The catalogs can be found on the G&W website: gwelec.com. If a drawing or instruction is required, contact the Cable Accessories Application Engineer to assist you.

Who do I contact with questions or for more information?

For any questions or additional resources, feel free to contact your Application Engineer.

Discount Schedule

All prices are LIST. To obtain BOOK price, multiply prices by trade net multiplier. Prices are FOB Bolingbrook, freight allowed to the first contiguous US destination*.

TRADE NET MULTIPLIER

SECTION CA1: Distribution Cable Terminations (15 – 46kV)	
Slip-On,	0.96
Capnut, and Sodertite Terminations.....	0.89
SECTION CA2: Cable Splicing Products (5-35kV)	
Tape Splice Kits, Splice Boxes.....	0.97
SECTION CA3: Transmission Cable Termination (69kV and above)	
All Products.....	1.11

ALLOWABLE BOOK PRICE DISCOUNT

1. DISTRIBUTOR 5% Off Book Price Only
Buys and takes title to product but not possession
2. O.E.M..... 5% Off Book Price Only
Buys, takes title, and possession of product incorporating same into his product or system.

***Freight allowed is for shipment by best way as determined by G&W. Consult factory for adder if special freight terms are required by customer e.g. dedicated truck, open top truck, specified carrier, international shipment, etc.**

NOTES:

1. Prices are FOB Bolingbrook, freight allowed to the first contiguous US destination for domestic orders. Freight allowed is for shipment by best way as determined by G&W. Consult factory for adder if special freight terms are required by customer e.g., dedicated truck, open top truck, specified carrier, international shipment, etc.
2. Send copies of all quotation letters and QUOTATION WORK SHEETS to Bolingbrook simultaneously with quote submitted to customer.
3. All quotations made from this price book should stipulate a 30-day validity period for domestic destination and 60 days for international destination.
4. Quotations should reflect G&W estimated shipping lead times per the monthly Marketing Updates from Cable Accessories and Switchgear. Any delivery requested later or delayed by customer has 1% per month escalation applied.
5. All international quotations regardless of value and domestic quotation over \$50,000 book must be referred to Bolingbrook for price.
6. Minimum order is \$250 for domestic destination and \$500 for international destination.
7. All quotations must have a copy of G&W's Terms and Conditions attached.
8. Sales personnel are encouraged to contact factory with competitive information and special bid requests.
9. Sales personnel are responsible for ensuring compliance of their quotation to the customer requirements. Customer specifications may be forwarded to G&W for assistance prior to quoting. In all cases, customer specifications must be forwarded with the purchase order.
10. Sales personnel are required to contact factory for pricing on any non-standard requirements (such as special dimensions, special bushing arrangements or options not listed in the price book.)
11. Sales personnel are required to contact factory for pricing on any quotation where the destination of the product falls outside of the territory.
12. Cable cut/data sheet are required at time of order. These must include all measurements including tolerances.

Slip-On Terminations

PRICE WORK SHEET

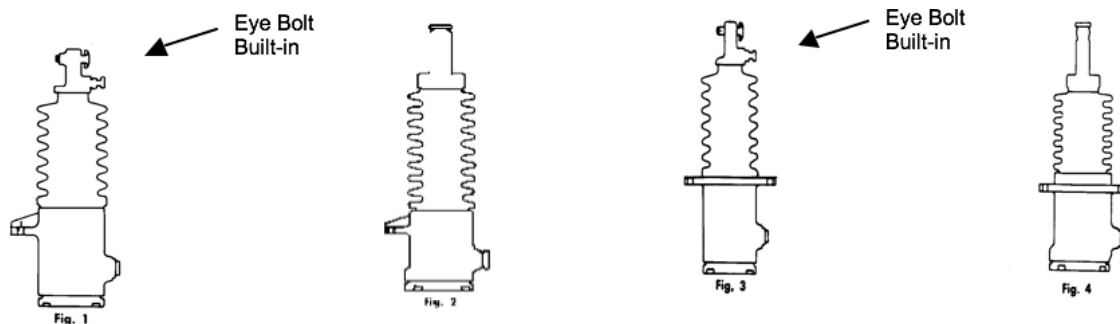
Refer to pages 6-11 for appropriate catalog numbers and prices.

Cable Specifications: You need the following data to price correctly.

	<u>EXAMPLE</u>
1) System voltage:	1) 15kV
2) Insulation material:	2) Ethylene Propylene Rubber
3) Insulation O.D.:	3) 1.09 inch outside diameter
4) No. of conductors:	4) Single conductor
5) Conductor size / shape:	5) 350 KCM concentric
6) Conductor material:	6) Copper
7) Shielding material:	7) Copper tape
8) Jacket material:	8) Polyethylene
9) Jacket O.D.:	9) 1.40 inch O.D.

Price Workup

1) Terminator Catalog Number: _____ Based on voltage, conductor size, cable semi-con O.D., conductor material and mounting configuration (bracket/flange).	List Price: _____
2) Connector Catalog Number: _____ Included in terminator price. Based on conductor size and shape.	List Price: _____
3) Adapter Kit Catalog Number: _____ Based on conductor type and cable jacket OD. No kit required for URD cable.	List Price: _____
4) Aerial Lug Catalog Number: _____ Based on conductor material and size. Eyebolt style terminators have the aerial lug built in.	List Price: _____
5) Mounting Bracket Catalog Number: _____ Based on application.	List Price: _____
6) Adders: _____ Note specific price pages for appropriate adders.	List Price: _____
	Total List: _____
	Multiplier: _____
	Book Price: _____
	Discount: _____
	Special Shipping Requirements: _____
	Total Price: _____



PRICE ADDERS:

Reference last digit of termination catalog number for size indicator.

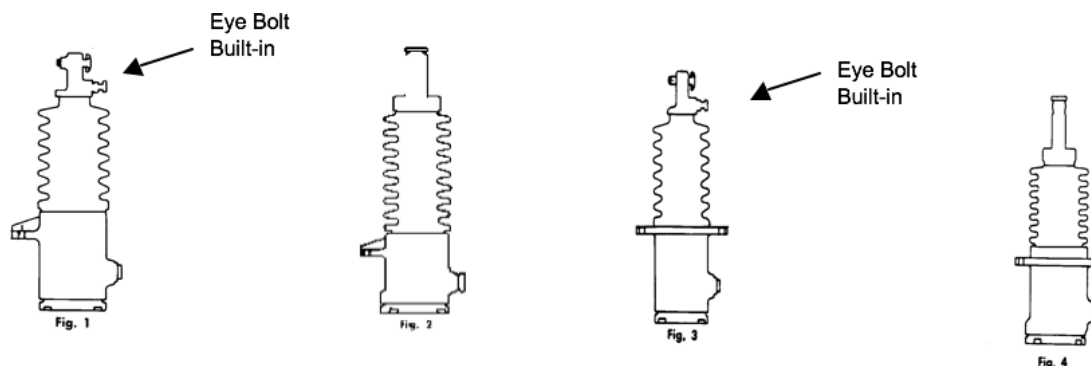
- Copper hood instead of standard tin plated aluminum, Size 1 - \$58.00; Size 2 and 3 - \$85.00.
- Brass bodies instead of standard cast aluminum, Size 1 - \$75.00; Size 2 and 3 - \$152.00.
- PATT terminators with size 1/0 capnut-style hood only for use with size 1/0 capnut aerial lugs (see CA1-51, Page 8).
PATT 1701 - \$125.00; PATT 1801 and PATT1802 - \$148.00. Aerial lugs must be priced separately. For Factory Sealed consult factory.

1/C BRACKET MOUNTED - Catalog number includes pre-filled terminator with cast aluminum body, tin-plated aluminum hood and compression connector. Compression connector catalog number must be specified separately (see page 4).

Volt. (KV)	Cat. No.	Cu AWG/KCM (mm ²)	Al AWG/KCM (mm ²)	Semi-con O.D.* in. (mm max.)	Wt. lbs. (kg)	Fig.	List Price	
							Cu Cable	Al Cable
15 (110kV BIL)	PAT 1701	250 (127)	250 (127)	5/8 - 1 (25.4)	6 (2.7)	1	\$1318	\$1313
	PAT 1772	750 (380)	500 (253)	1 - 1 5/8 (41.3)	12 1/2 (5.7)	2	\$1584	\$1524
	PAT 1773	1500 (760)	1250 (633)	1 5/16 - 2 3/16 (55.5)	14 (6.4)	4	\$1948	\$2378
25 (150kV BIL)	PAT 1801	250 (67)	250 (67)	5/8 - 1 (25.4)	8 1/2 (3.9)	1	\$1511	\$1484
	PAT 1802	250 (127)	250 (127)	3/4 - 1 1/4 (31.7)	13 (5.9)	1	\$1624	\$1647
	PAT 1872	750 (380)	500 (253)	1 - 1 5/8 (41.3)	15 (6.8)	2	\$1438	\$1512
	PAT 1873	1500 (760)	1250 (633)	1 5/16 - 2 3/16 (55.5)	20 (9.1)	4	\$1765	\$2016
34.5 (200kV BIL)	PAT 1972	750 (380)	500 (253)	1 - 1 5/8 (41.3)	20 (9.1)	2	\$1993	\$1920
	PAT 1973	1500 (760)	1250 (633)	1 5/16 - 2 3/16 (55.5)	30 (13.6)	4	\$2335	\$2426
46 (250kV BIL)	PAT 1073	1500 (760)	1250 (633)	1 5/16 - 2 3/16 (55.5)	36 (16.3)	4	\$2295	\$2409

*O.D. of semi-con jacket over insulation is used for sizing.

Max. Continuous current rating - same as cable Exception: For PILC, use O.D. over lead.



PRICE ADDERS:

Reference last digit of termination catalog number for size indicator.

- Copper hood instead of standard tin plated aluminum, Size 1 - \$58.00; Size 2 and 3 - \$85.00.
- Brass bodies instead of standard cast aluminum, Size 1 - \$75.00; Size 2 and 3 - \$152.00.
- PATT terminators with size 1/0 capnut-style hood only for use with size 1/0 capnut aerial lugs (see CA1-51, Page 8).
PATT 1701 - \$125.00; PATT 1801 and PATT1802 - \$148.00. Aerial lugs must be priced separately. For Factory Sealed consult factory

1/C FLANGE MOUNTED - Catalog number includes pre-filled termination with cast aluminum body, tin-plated aluminum hood, compression connector (specify catalog number separately, see page 4) and a flange gasket. Can be used for air-insulated equipment. Do not use for oil or gas insulated equipment.

Volt. (KV)	Cat. No.	Cu AWG/KCM (mm ²)	Al AWG/KCM (mm ²)	Semi-con O.D.* in. (mm max.)	Wt. lbs. (kg)	Fig.	List Price	
							Cu Cable	Al Cable
15 (110kV BIL)	PATR 1701	250 (127)	250 (127)	5/8 - 1 (25.4)	7 (3.2)	3	\$1212	\$1229
	PATR 1772	750 (380)	500 (253)	1 - 1 5/8 (41.3)	13 (5.9)	4	\$1759	\$1687
	PATR 1773	1500 (760)	1250 (633)	1 5/16 - 2 3/16 (55.5)	14 (6.4)	4	\$1954	\$2011
25 (150kV BIL)	PATR 1801	250 (127)	250 (127)	5/8 - 1 (25.4)	10 (4.5)	3	C.F.	C.F.
	PATR 1802	250 (127)	250 (127)	3/4 - 1 1/4 (31.7)	14 (6.4)	3	\$2814	\$2682
	PATR 1872	750 (380)	500 (253)	1 - 1 5/8 (41.3)	16 (7.3)	4	\$1500	\$1516
	PATR 1873	1500 (760)	1250 (633)	1 5/16 - 2 3/16 (55.5)	20 (9.1)	4	\$1898	\$2042
34.5 (200kV BIL)	PATR 1972	750 (380)	500 (253)	1 - 1 5/8 (41.3)	21 (9.5)	4	\$1825	\$2021
	PATR 1973	1500 (760)	1250 (633)	1 5/16 - 2 3/16 (55.5)	30 (13.6)	4	\$2072	\$2388
46 (250kV BIL)	PATR 1073	1500 (760)	1250 (633)	1 5/16 - 2 3/16 (55.5)	36 (16.3)	4	\$2368	\$2416

*O.D. of semi-con jacket over insulation is used for sizing. Exception: For PILC, use O.D. over lead.
Max. Continuous current rating - same as cable

REPLACEMENT FLANGE GASKETS

Based on last digit of termination catalog number.

Terminator Size	Part No.	List Price
1	A1758-9	\$17
2	A1793-11	\$21
3	A1793-12	\$25

CONNECTORS

Connectors are included in Basic Terminator. Prices shown apply when connector is sold separately.
Connectors listed are not compatible with Factory Sealed Copper-hood Slip-on terminations.

COMPRESSION CONNECTORS FOR EYEBOLT STYLE TERMINATORS

Conductor size* AWG/KCM			Cu Cat. No.	Cu Barrel OD (in.)	List Price	Al Cat. No.	Al Barrel OD (in.)	List Price
SC	CR	SD						
4	-	-	A5087-22	.34	\$236	A5088-22	.65	\$140
-	2	2	A5087-117	.38	\$236	A5088-230	.65	\$140
2	1	1	A5087-23	.41	\$236	A5088-23	.65	\$140
1	1/0	1/0	A5087-24	.46	\$236	A5088-24	.65	\$140
1/0	2/0	2/0	A5087-25	.51	\$236	A5088-25	.65	\$140
2/0	3/0	3/0	A5087-26	.56	\$279	A5088-26	.84	\$140
3/0	4/0	4/0	A5087-27	.61	\$279	A5088-27	.84	\$140
4/0	250	-	A5087-28	.69	\$279	A5088-28	.84	\$140
250	300	-	A5087-29	.75	\$279	A5088-29	.94	\$140

*SC=Stranded and Compressed. CR=Compact Round. SD=Solid.

COMPRESSION CONNECTORS FOR HOOD STYLE TERMINATORS

Conductor size* AWG/KCM			Cu Cat. No.	Cu Barrel OD (in.)	List Price	Al Cat. No.	Al Barrel OD (in.)	List Price
SC	CR	SD						
4	-	-	A5087-32	.34	\$238	A5088-30	.65	\$221
2	1	1	A5087-30	.41	\$238	A5088-31	.65	\$221
1	1/0	1/0	A5087-33	.46	\$238	A5088-32	.65	\$354
1/0	2/0	2/0	A5087-31	.51	\$238	A5088-33	.65	\$354
2/0	3/0	3/0	A5087-21	.56	\$238	A5088-34	.84	\$354
3/0	4/0	4/0	A5087	.61	\$238	A5088	.84	\$415
4/0	250	-	A5087-1	.69	\$238	A5088-1	.84	\$237
250	300	-	A5087-2	.75	\$238	A5088-2	.94	\$237
-	350	-	A5087-5	.87	\$238	A5088-5	1.00	\$237
300	-	-	A5087-3	.81	\$238	A5088-3	1.00	\$237
-	400	-	A5087-7	.95	\$238	A5088-7	1.12	\$237
350	-	-	A5087-4	.87	\$238	A5088-4	1.12	\$242
-	450	-	A5087-9	.95	\$238	A5088-9	1.19	\$242
400	500	-	A5087-6	.95	\$238	A5088-6	1.19	\$242
450	550	-	A5087-8	1.01	\$238	A5088-8	1.31	\$242
500	600	-	A5087-10	1.06	\$238	A5088-10	1.31	\$242
550	650	-	A5087-11	1.12	\$343	A5088-11	1.44	\$451
600	700	-	A5087-12	1.19	\$343	A5088-12	1.44	\$451
-	750	-	A5087-16	1.23	\$343	A5088-16	1.59	\$493
650	800	-	A5087-13	1.23	\$343	A5088-13	1.59	\$493
700	-	-	A5087-14	1.25	\$343	A5088-14	1.59	\$493
750	900	-	A5087-15	1.30	\$343	A5088-15	1.59	\$631
800	-	-	A5087-17	1.35	\$343	A5088-17	1.65	\$493
-	1000	-	A5087-20	1.50	\$343	A5088-20	1.65	\$493
900	-	-	A5087-18	1.50	\$343	A5088-18	1.65	\$493
1000	-	-	A5087-19	1.50	\$343	A5088-19	1.84	\$493
1250	-	-	A5087-89	1.69	\$647	A5088-35	2.12	\$493
1500	-	-	A5087-34	1.84	\$443			

*SC=Stranded and Compressed. CR=Compact Round. SD=Solid.

ADAPTER KITS (Priced Extra)

Slip-on terminators are designed for single conductor, polyethylene insulated, concentric neutral URD cables. To terminate paper or varnished cambric insulated, lead sheath cables or shielded, jacketed cables having EPR rubber or polyethylene insulation, one of the following adapter kits must be used. Refer to the adapter kit selection chart below.

ADAPTER SELECTOR CHART

Application	PAT PATR 1701	PAT PATR 1772	PAT PATR 1773	PAT PATR 1801	PAT PATR 1802	PAT PATR 1872	PAT PATR 1873	PAT PATR 1972	PAT PATR 1973	PAT PATR 1073
For polyethylene or EPR rubber insulated, shielded, jacketed or lead sheath cables (without wiped joint).	K1	K2	K3	K1	K2	K2	K3	K2	K3	K3
For polyethylene or EPR rubber insulated, lead sheathed cables where wiped joint required.	W1	W2	W3	W1	W2	W2	W3	W2	W3	W3
For paper or varnished cambric insulated, lead sheath cables (wiped joint required).	PW11	PW21	PW31	PW11	PW21	PW22	PW32	PW22	PW33	PW33

“K” KIT

For polyethylene or EPR rubber insulated, tape shielded or lead sheath cables. The kit consists of a grounding strap, clamp, a strip of rubber, sealing boot and housing. A “K” kit adds approximately 2 ¾” to the length of the terminator. K1 kits include ground strap and tension spring, instead of clamp and strip of rubber.

Cat. No.	Cable Dia. Range* (in.)	Wt. lbs.	List Price	Part No.
K1	1 3/16 - 1 3/16	¾	\$136	A5086-12
K2	1 3/16 - 1 5/8	1	\$107	A5086
K2G3	1 5/8 - 1 7/8	1	\$181	A5086-C
K3	1 1/2 - 2 3/16	1 1/2	\$109	A5086-1
K3G3	2 3/16 - 2 11/16	1 1/2	\$346	A5086-1D

* Diameter is measured on overall jacket or lead sheath.

“W” KIT

For polyethylene or EPR rubber insulated, lead sheathed cables where a wiped joint is required. The kit consists of a brass-wiping sleeve. A boss with a ½”-13 tapped ground is provided on the sleeve.

Cat. No.	Cable Dia. Range** (in.)	Wt. lbs.	List Price
W1	1 3/16 - 1 3/16	3/4	\$388
W2	1 3/16 - 1 5/8	1	\$163
W3	1 1/2 - 2 3/16	1 1/2	\$424

** Diameter is measured over lead sheath.

“PW” KIT

For paper or varnished fabric cambric insulated, lead sheathed cables where a wiped joint is required. The kit consists of a “W” series kit combined with a roll of Teflon tape for protection of the paper or varnished cambric during insulation.

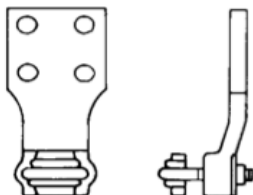
Cat. No.	Cable Dia. Range + (in.)	Wt. lbs.	List Price
PW11	1 3/16 - 1 3/16	1 ¼	\$448
PW21	1 3/16 - 1 5/8	1 ½	\$200
PW22	1 3/16 - 1 5/8	1 ½	\$256
PW31	1 1/2 - 2 3/16	2	\$267
PW32	1 1/2 - 2 3/16	2	\$318
PW33	1 1/2 - 2 3/16	2 ¼	\$385

*Diameter of overall jacket or lead sheath.

AERIAL LUG SELECTOR CHART (Priced Extra)

For PAT and PATR style terminators only.

Application	PAT PATR 1701	PAT PATR 1772	PAT PATR 1773	PAT PATR 1801	PAT PATR 1802	PAT PATR 1872	PAT PATR 1873	PAT PATR 1972	PAT PATR 1973	PAT PATR 1073
Separate lug required	NO	YES	YES	NO	NO	YES	YES	YES	YES	YES

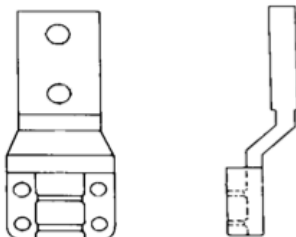


VERTICAL FLAT PAD TYPE

(4 Hole NEMA Pad)

Mat'l	Cat. No.	Approx. Wt. lbs. (kg)	List Price
Aluminum	A5076-192A	1 ½ (.68)	\$128
Copper	A5076-192	4 (1.8)	\$137

Tin plated Aluminum-Standard
Silver plated Copper- Add \$128
Tin plated Copper- Add \$80

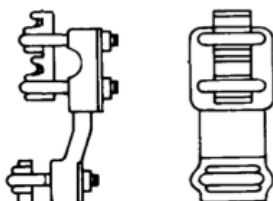


STYLE 8 OFFSET FLAT PAD

(2 Hole NEMA Pad)

Mat'l	Cat. No.	Approx. Wt. lbs. (kg)	List Price
Copper	A5076-100A	4 (1.8)	\$242

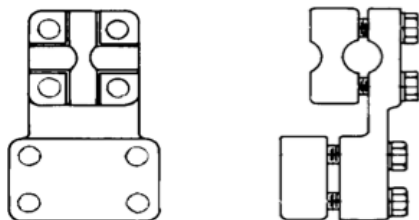
Silver plated Copper- Add \$128
Tin plated Copper- Add \$80



CLAMP TYPE

Mat'l	Cat. No.	Con. Size min.	Con. Size max.	Con. Size mm² max.	Approx. Wt. lbs. (kg)	List Price
Al	A5076-190A	2 AWG	500 KCM	253	1 ½ (.68)	\$342
	A5076-191A	550 KCM	1000 KCM	506	1 ½ (.68)	\$319
Cu	A5076-190	2 AWG	500 KCM	253	4 (1.8)	\$188
	A5076-191	550 KCM	1000 KCM	506	4 (1.8)	\$188

Tin plated Aluminum-Standard
Silver plated Copper- Add \$128
Tin plated Copper- Add \$80



STYLE 4 OFFSET

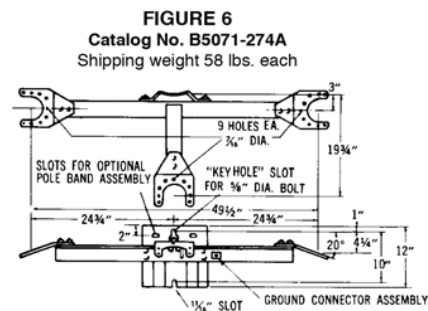
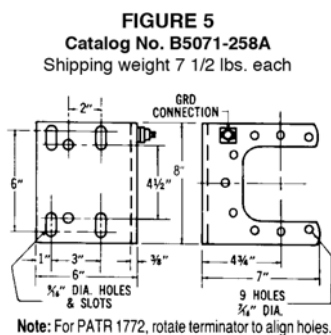
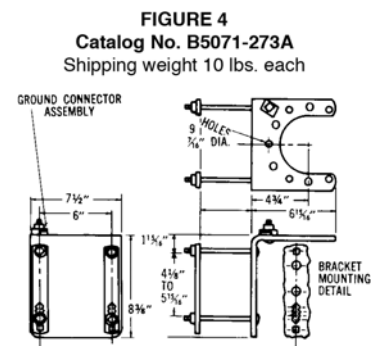
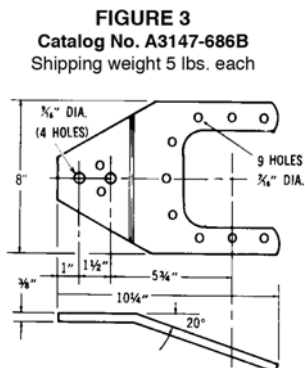
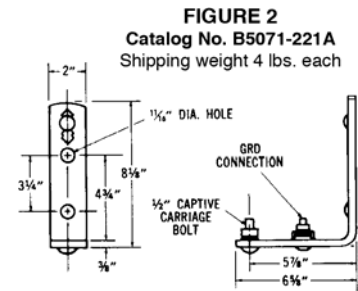
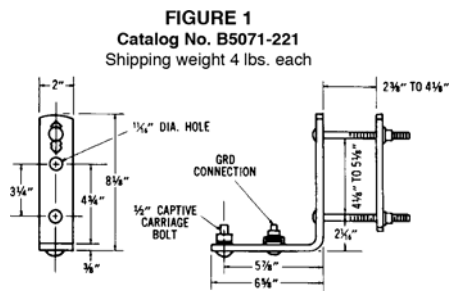
Mat'l	Cat. No.	Con. Size min.	Con. Size max.	Con. Size mm² max.	Approx. Wt. lbs. (kg)	List Price
Al	A5076-04A	2 AWG	500 KCM	253	1 ½ (.68)	\$345
	A5076-205A	550 KCM	1000 KCM	506	1 ½ (.68)	\$660
Cu	A5076-204	2 AWG	500 KCM	253	4 (1.8)	\$416
	A5076-205	550 KCM	1000 KCM	506	4 (1.8)	\$511

Tin plated Aluminum- Standard
Silver plated Copper- Add \$128
Tin plated Copper- Add \$80

Slip-On Terminations

BRACKET SELECTOR CHART (Priced Extra)

Fig. #	PAT 1701	PAT 1772	PAT 1801	PAT 1802	PAT 1872	PAT 1972	PAT R 1701	PAT R 1772	PAT/PAT R 1773	PAT R 1801	PAT R 1802	PAT R 1872	PAT/PAT R 1873	PAT R 1972	PAT/PAT R 1973	PAT/PAT R 1073	List Price
1	X	X	X	X	X	X	No Bracket			No Bracket							\$58
2	X	X	X	X	X	X											\$47
3								X	X		X	X	X	X	X	X	\$163
4								X	X		X	X	X	X	X	X	\$548
5								X	X		X	X	X	X	X	X	\$232
6								X	X		X	X	X	X	X	X	\$1021



Capnut Termination

PRICE WORK SHEET

Refer to pages 13-27 for appropriate catalog numbers and prices.

Cable Specifications: You need the following data to price correctly.

- | | |
|----------------------------|---------------------------|
| 1) System voltage: | EXAMPLE |
| 2) Insulation material: | 1) 15kV |
| 3) Insulation O.D.: | 2) XPLE (Cross Link Poly) |
| 4) No. of conductors: | 3) 2.25 inches |
| 5) Conductor size / shape: | 4) Three conductor |
| 6) Conductor material: | 5) 500 KCM concentric |
| 7) Shielding material: | 6) Copper |
| 8) Jacket material: | 7) Copper tape |
| 9) Jacket O.D.: | 8) PVC |
| 10) Ground Wire: | 9) 3.08-inch O.D. |
| | 10) #1 AWG |

Price Workup

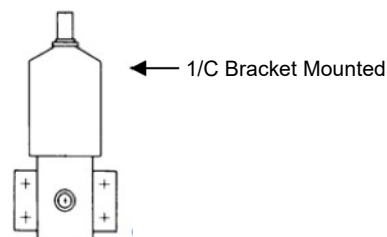
- | | |
|--|-------------------|
| 1) Terminator Catalog Number: _____
Based on voltage, conductor size, no. of
conductors, cable semi-con O.D.,
conductor material and mounting
configuration (bracket/flange/equipment). | List Price: _____ |
| 2) Connector/Hoodnut Catalog Number: _____
Based on conductor size and shape.
Multiply by number of phases | List Price: _____ |
| 3) Aerial Lug Catalog Number: _____
Based on conductor material and size.
Multiply by number of phases. | List Price: _____ |
| 4) Entrance Fitting: _____
Based on cable construction. | List Price: _____ |
| 5) Stress Cone Kit Number: _____
Based on cable insulation, conductor
size and system voltage. Multiply by
number of phases. | List Price: _____ |
| 6) Compound Type: _____
Based on cable insulation and
ambient operating
temperatures. Specify
thermometers if required. | List Price: _____ |
| 7) Adders: _____
* Note specific price pages for appropriate adders. | List Price: _____ |

Total List: _____
Multiplier: _____
Book Price: _____
Discount: _____
Special Shipping

Capnut Terminations

1/C BRACKET MOUNTED

Catalog numbers are for single conductor cable. Prices include terminator with cemented porcelain and entrance gasket. For aluminum cable over 250 kcmil, use the next larger size termination for correct internal clearances. Bodies are non-magnetic aluminum.



kV	Max. Cond. Size AWG/KCM (mm2)	Max. Cable OD in. (mm)	Catalog Number Outdoor	Part Number	Approx. Compd Req'd Gal (L)	Approx. Shpg Wt. lbs (kg)	Hoodnut Connector Assembly	Body Code Number	List Price
15 (110 kV BIL)	1/0 (53)	1 7/8 (48)	UT17031	A7600-15	3/8 (1)	24 (11)	AT20	3E4F	C.F.
	250 (127)	1 7/8 (48)	UT17231	A7600-18	3/8 (1)	25 (11)	AT22	3E4F	C.F.
	500 (253)	2 7/8 (73)	UT17541	A7600-23	5/8 (2)	27 (12)	AT35	4F4X	C.F.
	750 (380)	2 7/8 (73)	T17741	A7600-25	5/8 (2)	29 (13)	AT37	4F4X	C.F.
	1000 (507)	2 7/8 (73)	T17841	A7600-27	5/8 (2)	34 (15)	AT38	4F4X	C.F.
	1500 (760)	3 7/8 (98)	T17951	A7600-29	1 (4)	46 (20)	AT49	5G4X	C.F.
	2000 (1013)	3 7/8 (98)	T17X51	A7600-30	1 (4)	51 (23)	AT4X	5G4X	C.F.
25 (150 kV BIL)	1/0 (53)	1 7/8 (48)	UT18031	A7600-73	1/2 (2)	28 (13)	AT20	3E4F	C.F.
	250 (127)	2 7/8 (73)	UT18241	A7600-33	5/8 (2)	31 (14)	AT32	4F4X	C.F.
	500 (253)	2 7/8 (73)	AT18541	A7600-36	5/8 (2)	31 (14)	AT35	4F4X	C.F.
	750 (380)	2 7/8 (73)	T18741	A7600-68	5/8 (2)	45 (20)	AT37	4F4J	C.F.
	1000 (507)	2 7/8 (73)	T18841	A7600-39	5/8 (2)	50 (23)	AT38	4F4J	C.F.
	1500 (760)	3 7/8 (98)	T18951	A7600-74	1 (4)	64 (29)	AT49	5G4J	C.F.
	2000 (1013)	3 7/8 (98)	T18X51	A7600-82	1 (4)	69 (31)	AT4X	5G4J	C.F.
34.5 (200 kV BIL)	250 (127)	2 7/8 (73)	T19241	A7600-78	3/4 (3)	51 (23)	AT32	4F4J	C.F.
	500 (253)	2 7/8 (73)	UT19541	A7600-41	3/4 (3)	52 (24)	AT35	4F4J	C.F.
	500 (253)	2 7/8 (73)	XT19541	A7600-81	1 1/2 (6)	73 (33)	AT45	4H4J	C.F.
46 (250 kV BIL)*	250 (127)	2 7/8 (73)	T10241	A7600-44	1 3/4 (7)	75 (34)	AT32	4H4J	C.F.
	500 (253)	2 7/8 (73)	T10541	A7600-46	1 3/4 (7)	78 (35)	AT45	4H4J	C.F.

*Requires Oil Filling

OPTIONS:

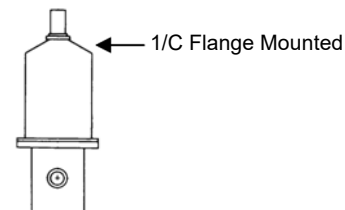
Bronze bodies are available- Consult factory.

REPLACEMENT ENTRANCE GASKETS

Body Size	Catalog Number	Part Number	List Price
3	A1846-10	A18460010000	\$10
4	A1758	A17580000000	\$16
5	A1093	A10930000000	\$29

Note: To identify body size use first digit of body code number.

1/C FLANGE MOUNTED – For Equipment Application Catalog numbers are for single conductor cable. Prices include terminator with cemented porcelain, entrance gasket and flange gasket. For aluminum cable over 250 kcmil, use the next larger size termination for correct internal clearances. Bodies are non-magnetic aluminum.



kV	Max. Cond. Size AWG/KCM (mm ²)	Max. Cable OD in. (mm)	Catalog Number	Part Number	Approx. Compd Req'd Gal (L)	Approx. Shpg Wt. lbs (kg)	Hoodnut Connector Assembly	Body Code Number	List Price
15 (110 kV BIL)	1/0 (53)	2 7/8 (73)	UTR17045	A7603-21	3/8 (1)	26 (12)	AT20	4E5MF	C.F.
	250 (127)	2 7/8 (73)	UTR17245	A7603-23	3/8 (1)	27 (12)	AT22	4E5MF	C.F.
	500 (253)	2 7/8 (73)	UTR17546	A7603-25	5/8 (2)	27 (12)	AT35	4F6MX	C.F.
	750 (380)	2 7/8 (73)	TR17746	A7603-26	5/8 (2)	29 (13)	AT37	4F6MX	C.F.
	1000 (507)	2 7/8 (73)	TR17846	A7603-27	5/8 (2)	35 (16)	AT38	4F6MX	C.F.
	1500 (760)	3 7/8 (98)	TR17956	A7603-28	1 (4)	45 (20)	AT49	5G6MX	C.F.
	2000 (1013)	3 7/8 (98)	TR17X56	A7603-29	1 (4)	49 (22)	AT4X	5G6MX	C.F.
25 (150 kV BIL)	1/0 (53)	2 7/8 (73)	TR18045	A7603-31	1/2 (2)	31 (14)	AT20	4E5MF	C.F.
	250 (127)	2 7/8 (73)	UTR18246	A7603-55	5/8 (2)	31 (14)	AT32	4F6MX	C.F.
	500 (253)	2 7/8 (73)	TR18546	A7603-35	5/8 (2)	33 (15)	AT35	4F6MX	C.F.
	750 (380)	2 7/8 (73)	TR18746	A7603-36	5/8 (2)	36 (16)	AT37	4F6MX	C.F.
	1000 (507)	2 7/8 (73)	TR18846	A7603-37	5/8 (2)	41 (19)	AT38	4F6MX	C.F.
	1500 (760)	3 7/8 (98)	TR18956	A7603-38	1 (4)	49 (22)	AT49	5G6MX	C.F.
	2000 (1013)	3 7/8 (98)	TR18X56	A7603-39	1 (4)	55 (25)	AT4X	5G6MX	C.F.
34.5 (200 kV BIL)	250 (127)	3 7/8 (98)	TR19256	A7603-40	1 1/4 (5)	47 (21)	AT32	5G6MX	C.F.
	500 (253)	3 7/8 (98)	TR19556	A7603-54	1 1/4 (5)	48 (22)	AT35	5G6MX	C.F.

OPTIONS:

Bronze bodies are available- Consult factory.

REPLACEMENT ENTRANCE GASKETS

Body Size	Catalog Number	Part Number	List Price
4	A1758	A17580000000	\$16
5	A1093	A10930000000	\$29

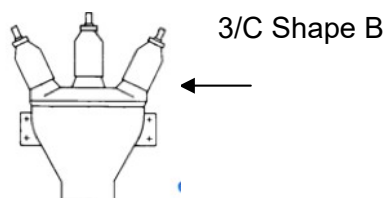
Note: To identify body size use first digit of body code number.

REPLACEMENT FLANGE GASKETS

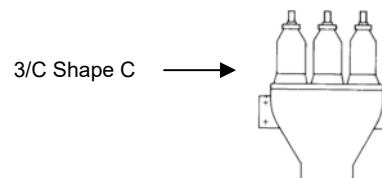
Body Size	Catalog Number	Part Number	List Price
5	A1093-5	A10930005000	\$56
6	A1602-3B	A16020003B00	\$120

Note: To identify body size use first digit of body code number.

3/C Shape B (CEMENTED PORCELAIN) Catalog numbers are for three-conductor cable. Prices include terminator with cemented porcelain, entrance gasket and lid gasket. For aluminum cable over 250 kcmil, use the next larger size termination for correct internal clearances.



kV	Max. Cond. Size AWG/KCM (mm ²)	Max. Cable OD in. (mm)	Catalog Number Outdoor	Part Number	Approx. Compd Req'd Gal (L)	Approx. Shpg Wt. lbs (kg)	Hoodnut Connector Assembly	Body Code Number	List Price
15 (110 kV BIL)	1/0 (53)	2 7/8 (73)	JT3704B	A7622-85	3 (11)	90 (41)	AT20	J4C	C.F.
	250 (127)	3 7/8 (98)	UT3725B	A7622-108	3 1/2 (13)	100 (45)	AT22	J5C	C.F.
	500 (253)	3 7/8 (98)	JT3755B	A7622-119	3 1/2 (13)	95 (43)	AT25	J5C	C.F.
	750 (380)	3 7/8 (98)	JT3775B	A7622-264	3 1/2 (13)	105 (48)	AT37	J5C	C.F.
	1000 (507)	3 7/8 (98)	JT3785B	A7622-251	3 1/2 (13)	112 (51)	AT38	J5C	C.F.
25 (150 kV BIL)	1/0 (53)	3 7/8 (98)	T3805B	A7622-190	5 1/2 (21)	157 (71)	AT20	K5C	C.F.
	250 (127)	3 7/8 (98)	T3825B	A7622-194	5 1/2 (21)	160 (73)	AT22	K5C	C.F.
	500 (253)	3 7/8 (98)	T3855B	A7622-141	5 1/2 (21)	150 (68)	AT25	K5C	C.F.
34.5 (200 kV BIL)	250 (127)	3 7/8 (98)	T3925B	A7622-209	8 (30)	180 (82)	AT32	L5C	C.F.
	500 (253)	3 7/8 (98)	T3955B	A7622-195	8 (30)	170 (77)	AT35	L5C	C.F.



3/C SHAPE C (Cemented Porcelain)

kV	Max. Cond. Size AWG/KCM (mm ²)	Max. Cable OD in. (mm)	Catalog Number Outdoor	Part Number	Approx. Compd Req'd Gal (L)	Approx. Shpg Wt. lbs (kg)	Hoodnut Connector Assembly	Body Code Number	List Price
15 (110 kV BIL)	1/0 (53)	3 7/8 (98)	T3705C	A7622-97	5 (19)	131 (59)	AT20	K5C	C.F.
	250 (127)	3 7/8 (98)	T3725C	A7622-114	5 (19)	134 (61)	AT22	K5C	C.F.
	500 (253)	3 7/8 (98)	T3755C	A7622-123	5 (19)	126 (57)	AT25	K5C	C.F.
	750 (380)	3 7/8 (98)	T3775C	A7622-189	5 (19)	136 (62)	AT37	K5C	C.F.
	1000 (507)	3 7/8 (98)	T3785C	A7622-245	5 (19)	143 (65)	AT38	K5C	C.F.

OPTIONS:

Bronze lids are available- Consult factory.
For shape K or U bodies add \$710.

REPLACEMENT ENTRANCE/LID GASKETS

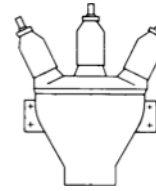
Gasket	Body Size	Catalog Number	Part Number	List Price
Entrance*	4	A1758	A17580000000	\$16
	5	A1093	A10930000000	\$29
Lid**	J	B1625	B16250000000	\$120
	K	B1626	B16260000000	\$65
	L	B1626-4	B16260004000	\$120

* To identify body size use second digit of body code number.

** To identify body size use first digit of body code number.

Capnut Terminations

Catalog numbers are for three-conductor cable. Prices include terminator with **detachable** porcelain, entrance gasket, lid gasket and porcelain gaskets. For aluminum cable over 250 kcmil, use the next larger size termination for correct internal clearances. Bodies and lids are non-magnetic aluminum.



← 3/C Shape B
Detachable

3/C SHAPE B (Detachable Porcelain)

kV	Max. Cond. Size AWG/KCM (mm ²)	Max. Cable OD in. (mm)	Catalog Number Outdoor	Part Number	Approx. Compd Req'd Gal (L)	Approx. Shpg Wt. lbs (kg)	Hoodnut Connector Assembly	Body Code Number	List Price
15 (110 kV BIL)	250 (127)	3 7/8 (98)	UTA3725B	A7623-118	3 1/2 (13)	95 (13)	AT32	J5C	C.F.
	500 (253)	3 7/8 (98)	JTA3755B	A7623-50	3 1/2 (13)	108 (49)	AT35	J5C	C.F.
	750 (380)	3 7/8 (98)	JTA3775B	A7623-56	3 1/2 (13)	112 (51)	AT37	J5C	C.F.
25 (150 kV BIL)	250 (127)	3 7/8 (98)	TA3825B	A7623-116	5 1/2 (21)	172 (78)	AT22	K5C	C.F.
	500 (253)	3 7/8 (98)	TA3855B	A7623-114	5 1/2 (21)	155 (70)	AT25	K5C	C.F.

OPTIONS:

Bronze lids are available- Consult factory.
For shape K or U bodies add \$704.

REPLACEMENT ENTRANCE/LID GASKETS

Gasket	Body Size	Catalog Number	Part Number	List Price
Entrance*	5	A1093	A10930000000	\$29
Lid**	J	B1625	B16250000000	\$120
	K	B1626	B16260000000	\$65

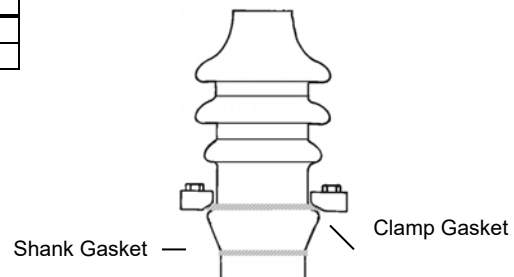
* To identify body size use second digit of body code number.

** To identify body size use first digit of body code number.

REPLACEMENT PORCELAIN GASKETS (2 Gaskets- One set)

Gasket Description	Catalog Number +	Part Number	List Price
Porcelain Shank	A1804-6	A18040006000	\$27
Clamp	A1641	A16410000000	\$18

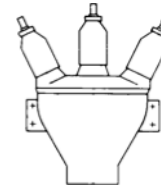
+ Both clamp and shank gaskets should be replaced whenever porcelains are replaced.



Catalog numbers are for three-conductor cable. Prices include terminator with **detachable** porcelain, entrance gasket, lid gasket, porcelain gasket and plate gasket. For aluminum cable over 250 kcmil, use the next larger size termination for correct internal clearances. Bodies and lids are non-magnetic aluminum.

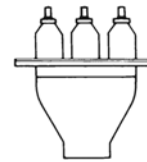
3/C PLATE MOUNTED, Type TRA Shape B (Detachable Porcelain)

For indoor mounting in air and/or ventilated compartments.



Type TRA Shape B Detachable

kV	Max. Cond. Size AWG/KCM (mm ²)	Max. Cable OD in. (mm)	Catalog Number Indoor	Part Number	Approx. Compd Req'd Gal (L)	Approx. Shpg Wt. lbs (kg)	Hoodnut Connector Assembly	Body Code Number	Mtg. Plate Symbol	List Price
15 (110 kV BIL)	250 (127)	3 7/8 (98)	UTRA3725B	A7629-104	3 1/2 (13)	107 (49)	AT32	J5C-1	JB-2	C.F.
	500 (253)	3 7/8 (98)	TRA3755B	A7629-73	3 1/2 (13)	115 (52)	AT35	J5C-1	JB-2	C.F.
25 (150 kV BIL)	1/0 (53)	3 7/8 (98)	TRA3805B	A7629-85	5 1/2 (21)	157 (71)	AT20	K5C-1	KB-2	C.F.
	250 (127)	3 7/8 (98)	TRA3825B	A7629-125	5 1/2 (21)	160 (73)	AT22	K5C-1	KB-2	C.F.



Type TRA Shape C Detachable

3/C PLATE MOUNTED, Type TRA Shape C (Detachable Porcelain)

For indoor mounting in air or with porcelain completely immersed in oil.

For mounting in air, all live parts (hoodnut and aerial lugs) should be taped. For tape kit A5080 1267 000 in air mounting add \$58.

kV	Max. Cond. Size AWG/KC M(mm ²)	Max. Cable OD in. (mm)	Catalog Number Indoor	Part Number	Approx. Compd Req'd Gal (L)	Approx. Shpg Wt. lbs (kg)	Hoodnut Connector Assembly	Body Code Number	Mtg. Plate Symbol	List Price
15 (110 kV BIL)	250 (127)	3 7/8 (98)	TRA3725C	A7629-68	5 (19)	170 (77)	AT32	K5C-2	4	C.F.
	500 (253)	3 7/8 (98)	TRA3755C	A7629-79	5 (19)	178 (81)	AT35	K5C-2	4	C.F.
25 (150 kV BIL)	1/0 (53)	3 7/8 (98)	TRA3805C	A7629-86	5 (19)	178 (81)	AT20	K5C-2	4	C.F.
	250 (127)	3 7/8 (98)	TRA3825C	A7629-105	5 (19)	180 (82)	AT22	K5C-2	4	C.F.
	500 (253)	3 7/8 (98)	TRA3855C	A7629-7	5 (19)	158 (72)	AT25	K5C-2	4	C.F.

OPTIONS:

Bronze lids are available- Consult factory.

For shape K or U bodies add \$894.

Gasket	Body Size	Catalog Number	Part Number	List Price
Entrance*	5	A1093	A10930000000	\$29
Lid**	J	B1625	B16250000000	\$120
	K	B1626	B16260000000	\$65

* To identify body size use second digit of body code number.

** To identify body size use first digit of body code number.

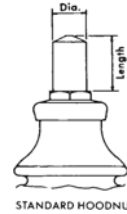
Gasket	Plate Symbol	Catalog Number	Part Number	List Price
Plate	JB2	B1463-57	B14630057000	\$289
	KB2	B1463-90	B14630090000	\$385
	4	B1627-16	B16270016000	\$75

NOTE: For replacement porcelain gaskets see page 5.

CONNECTORS (Priced Extra)

Includes connector (drilled to cable size), copper hoodnut and gasket.

1. Aluminum conductor cables require compression style connectors.
2. Copper conductor cables will accept either solder style or compression style connectors.
3. Exact cable size for connector must be specified with order.



Gasket Location

STANDARD HOODNUT

Solder (Copper)

Connector Size Range AWG/KCM		Conn. Hoodnut* Assembly Cat. No.	Hoodnut Dimensions		Gasket Part No.	Approx. Shpg Wt. lbs (kg)	List Price
Min.	Max. (Max. mm ²)		Diameter in. (mm)	Length in. (mm)			
4	1/0 (53)	AT10	.68 (17)	1/8 (22)	A1647	1 (.45)	\$536
4	1/0 (53)	AT20	.68 (17)	1/8 (22)	A1625-2	1 (.45)	\$563
1/0	250 (127)	AT12	.80 (20)	1 1/16 (30)	A1647	1 1/2 (.68)	\$440
1/0	250 (127)	AT22	.80 (20)	1 1/16 (30)	A1625-2	1 1/2 (.68)	\$505
1/0	250 (127)	AT32	.80 (20)	1 1/16 (30)	A1626	1 1/2 (.68)	\$732
250	500 (253)	AT25	1.05 (27)	1 1/8 (41)	A1625-2	2 1/2 (1.14)	\$665
250	500 (253)	AT35	1.05 (27)	1 1/8 (41)	A1626	2 1/2 (1.14)	\$665
250	500 (253)	AT45	1.05 (27)	1 1/2 (38)	A1835	2 1/2 (1.14)	\$1143
500	750 (380)	AT37	1.24 (31)	1 15/16 (49)	A1626	3 1/2 (1.59)	\$1138
500	750 (380)	AT47	1.24 (31)	1 1/8 (48)	A1835	3 1/2 (1.59)	\$1342
750	1000 (507)	AT38	1.37 (35)	2 1/2 (64)	A1626	4 1/2 (2.04)	\$602
750	1000 (507)	AT48	1.37 (35)	2 1/2 (64)	A1835	4 1/2 (2.04)	\$608
1000	1500 (760)	AT49	1.74 (44)	2 3/4 (70)	A1835	8 (3.63)	\$2565
1500	2000 (1013)	AT4X	1.93 (49)	2 1/2 (64)	A1835	11 (4.99)	\$1445
2000	2500 (1220)	ZAT4J **	1.93 (49)	3 1/4 (83)	A1835	12 (5.45)	\$1980

Compression (Copper)

Connector Size Range AWG/KCM		Conn. Hoodnut* Assembly Cat. No.	Hoodnut Dimensions		Gasket Part No.	Approx. Shpg Wt. lbs (kg)	List Price
Min.	Max. (Max. mm ²)		Diameter in. (mm)	Length in. (mm)			
4	1/0 (53)	AT20H	.68 (17)	1/8 (22)	A1625-2	1 (.45)	\$716
4	250 (127)	AT12H	.80 (20)	1 1/16 (30)	A1647	1 1/2 (.68)	\$508
4	250 (127)	AT22H	.80 (20)	1 1/16 (30)	A1625-2	1 1/2 (.68)	\$1005
4	250 (127)	AT32H	.80 (20)	1 1/16 (30)	A1626	1 1/2 (.68)	\$857
4	500 (253)	AT25H	1.05 (27)	1 1/8 (41)	A1625-2	2 1/2 (1.14)	\$754
4	500 (253)	AT35H	1.05 (27)	1 1/8 (41)	A1626	2 1/2 (1.14)	\$1131
4/0	750 (380)	AT37H	1.24 (31)	1 15/16 (49)	A1626	3 1/2 (1.59)	\$1445
4/0	750 (380)	AT47H	1.24 (31)	1 1/8 (48)	A1835	3 1/2 (1.59)	C.F.
300	1000 (507)	AT38H	1.37 (35)	2 1/2 (64)	A1626	4 1/2 (2.04)	\$1190
500	1500 (760)	AT49H	1.74 (44)	2 3/4 (70)	A1835	8 (3.63)	\$2124
500	2000 (1013)	AT4XH	1.93 (49)	2 1/2 (64)	A1835	11 (4.99)	\$1566

Compression (Aluminum)

Connector Size Range AWG/KCM		Conn. Hoodnut* Assembly Cat. No.	Hoodnut Dimensions		Gasket Part No.	Approx. Shpg Wt. lbs (kg)	List Price
Min.	Max. (Max. mm ²)		Diameter in. (mm)	Length in. (mm)			
4	1/0 (53)	AT10A	.68 (17)	1/8 (22)	A1647	1 (.45)	C.F.
4	1/0 (53)	AT20A	.68 (17)	1/8 (22)	A1625-2	1 (.45)	\$988
4	250 (127)	AT12A	.80 (20)	1 1/16 (30)	A1647	1 1/2 (.68)	C.F.
4	250 (127)	AT22A	.80 (20)	1 1/16 (30)	A1625-2	1 1/2 (.68)	C.F.
4	250 (127)	AT32A	.80 (20)	1 1/16 (30)	A1626	1 1/2 (.68)	\$2346
4	500 (253)	AT25A	1.05 (27)	1 1/8 (41)	A1625-2	2 1/2 (1.14)	\$1500
4	500 (253)	AT35A	1.05 (27)	1 1/8 (41)	A1626	2 1/2 (1.14)	\$1124
4	500 (253)	AT45A	1.05 (27)	1 1/2 (38)	A1835	2 1/2 (1.14)	\$1457
4	750 (380)	AT37A	1.24 (31)	1 15/16 (49)	A1626	3 1/2 (1.59)	\$1215
4	750 (380)	AT47A	1.24 (31)	1 1/8 (48)	A1835	3 1/2 (1.59)	\$1378
300	1000 (507)	AT38A	1.37 (35)	2 1/2 (64)	A1626	4 1/2 (2.04)	C.F.
300	1000 (507)	AT48A	1.37 (35)	2 1/2 (64)	A1835	4 1/2 (2.04)	C.F.
500	1500 (760)	AT49A	1.74 (44)	2 3/4 (70)	A1835	8 (3.63)	C.F.
500	2000 (1013)	AT4XA	1.93 (49)	2 1/2 (64)	A1835	11 (4.99)	C.F.

OPTIONS: For silver-plated hoodnut add \$128.

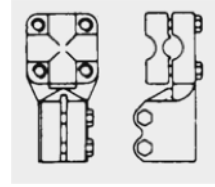
* If vented hoodnut assembly is required add Z in front of the catalog number and add \$109.

**Hoodnut assembly available only in vented version.

AERIAL LUGS (Priced Extra)

Copper aerial lugs are standard.

Silver or tin plated lugs are available, see options below.

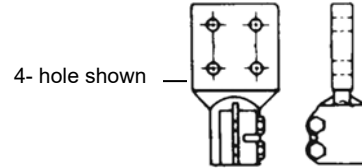


STYLE 3-D. Adjustable Clamp Type, Horizontal or Vertical Take-off

Max. Cond. Size AWG/kcm (mm ²)	For Hoodnut Dia. D. (in.)	Part No.	Part No.	Standard Clamping Range	Approx. Shpg Wt. lbs (kg)	List Price
1/0 (53)	0.684	3D10	A50760032000	#4AWG to #2/0 AWG	1 ¼ (.57)	\$331
250 (127)	0.809	3D21	A50760059000	#6 AWG to 250 KCM	1 ½ (.68)	\$358
500 (253)	1.057	3D55	A50760034000	#2 AWG to 500 KCM	2 ½ (1.1)	\$355
750 (380)	1.245	3D75	A50760040000	#2 AWG to 500 KCM	4 ¼ (1.9)	\$503
750 (380)	1.245	3D77	A50760035000	250 KCM to 750 KCM	4 ½ (2.0)	\$444
1000 (507)	1.370	3D88	A50760036000	600 KCM to 1000 KCM	7 (3.2)	\$713

OPTIONS: Silver plating add \$186.

Tin plating add \$99.

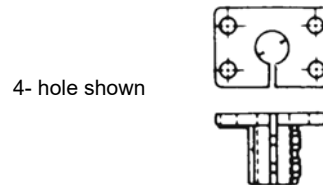


STYLE 8. Bus Type, Vertical Surface

Max. Cond. Size AWG/kcm (mm ²)	For Hoodnut Dia. D. (in.)	Part No.	No. of Holes in Pad	Size of Holes in Pad (in.)	Part. No.	Approx. Shpg Wt. lbs (kg)	List Price
1/0 (53)	0.684	A478-5	1	9/16	A04780005000	1 (.45)	\$106
250 (127)	0.809	A479-32	1	9/16	A04790032000	1 ¾ (.79)	\$372
500 (253)	1.057	A480-23	2	9/16	A04800023000	2 ½ (1.1)	\$112
750 (380)	1.245	A481-23	4	9/16	A04810023000	4 (1.8)	\$257
1000 (507)	1.370	A482-23	4	9/16	A04820023000	4 ½ (2.0)	\$702
1500 (760)	1.745	A483-11	4	9/16	A04830011000	7 (3.2)	\$537
2000 (1013)	1.932	A484-8	4	9/16	A04840008000	12 (5.5)	\$653

OPTIONS: Silver plating add \$166.

Tin plating add \$99.



STYLE 18. Bus Type, Horizontal Surface

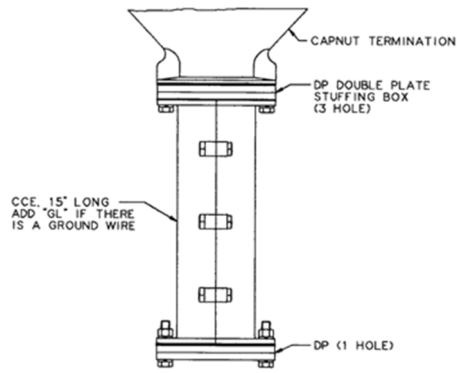
Max. Cond. Size AWG/kcm (mm ²)	For Hoodnut Dia. D. (in.)	Part No.	No. of Holes in Pad	Size of Holes in Pad (in.)	Part. No.	Approx. Shpg Wt. lbs (kg)	List Price
1/0 (53)	0.684	A521	1	9/16	A05210000000	¾ (.34)	\$305
250 (127)	0.809	A522	2	9/16	A05220000000	1 (.45)	\$239
500 (253)	1.057	A523	2	9/16	A05230000000	1 ¾ (.79)	\$999
750 (380)	1.245	A524	4	9/16	A05240000000	2 ½ (1.1)	\$469
1000 (507)	1.370	A525	4	9/16	A05250000000	3 ½ (1.6)	\$302
1500 (760)	1.745	A526	4	9/16	A05260000000	5 (2.3)	\$685
2000 (1013)	1.932	A527	4	9/16	A05270000000	5 (2.3)	\$1124

OPTIONS: Silver plating add \$166.

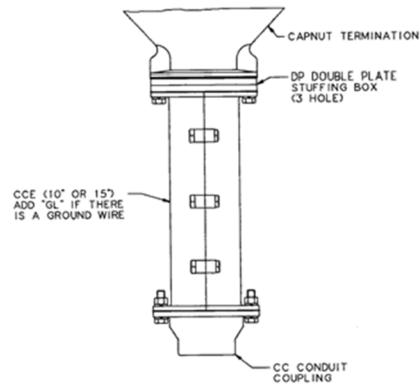
Tin plating add \$99.

3/C CAPNUT ENTRANCE CONFIGURATION EXAMPLES

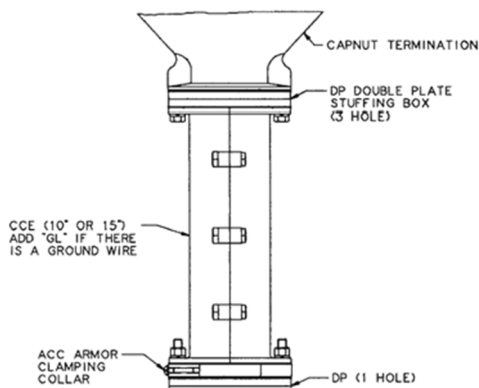
See Entrance Fittings for Specific Details.



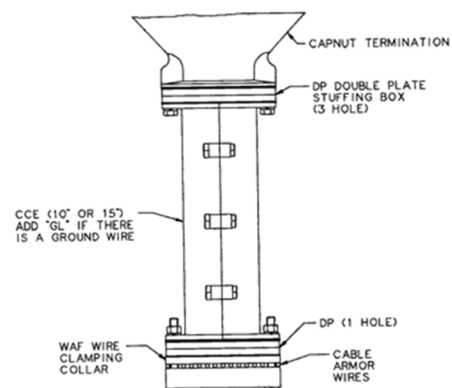
NOTE:
FOR RELIABILITY AND EASE OF INSTALLATION THE FOLLOWING ENTRANCE CONFIGURATION IS RECOMMENDED FOR TYPICAL 3/C CABLE APPLICATIONS. THE 15" SPLIT EXTENSION IS NECESSARY FOR CLEARANCE DURING INSTALLATION.



TYPICAL ENTRANCE CONFIGURATION FOR CABLE IN CONDUIT PIPE. AN OPTIONAL ONE HOLE DP CAN BE INCLUDED BETWEEN THE CONDUIT COUPLING AND SPLIT EXTENSION.



TYPICAL ENTRANCE CONFIGURATION FOR INTERLOCKED ARMOR CABLE



TYPICAL ENTRANCE CONFIGURATION FOR WIRE ARMOR CABLE

ENTRANCE FITTINGS

Price includes entrance gaskets and hardware (bolts, nuts, etc) when purchased with terminator.

WS WIPING SLEEVE

Wiping sleeves are cast bronze. The conical end is sawed off in the field to fit the cable on the job. Wiping sleeves are furnished untinned. (Add suffix G1 to WS catalog number for tinning.)

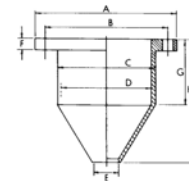
Base Size	Dimensions in inches								Mtg. Holes (No.-Size)	Cat. No.	Max. O.D. Cable (in.)	Shpg. Wt. lbs.
	A	B	C	D	E	F	G	H				
3	3 1/16	2 5/8	2 9/16	2 5/16	5/8	1/16	2 3/8	3 1/8	4-----3/8"	WS31	2 1/4	2 3/4
4	5 9/16	4 3/4	3 3/4	3 7/16	1	1/16	2 9/16	4 11/16	6-----7/16"	WS41	3 3/8	5
5	7 3/16	6 1/8	4 5/16	4 1/16	1 1/2	1/16	3 5/16	5 13/16	6-----9/16"	WS51	4	8 1/4
6	8 1/2	7 1/4	5 3/4	5 1/2	2	1/2	3 3/8	6	6-----9/16"	WS61	5 1/4	12

OPTION: If conical end cut to size at factory add **\$53.**

NOTE: Special WS (not shown) with enlarged mounting holes is required if used in conjunction with EF entrance flange insulators. **Consult factory for price.**

List Price

Base Size	Untinned	Tinned (G1)
3	\$485	\$520
4	\$803	\$925
5	\$865	\$958
6	C.F.	C.F.



WSV INVERTED WIPING SLEEVE

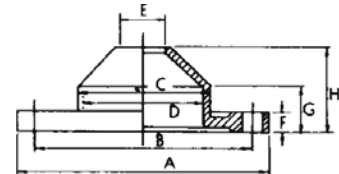
Inverted wiping sleeves are cast bronze. The conical end is sawed off in the field to fit the cable. Wiping sleeves are furnished untinned. (Add suffix G1 to WSV catalog number for tinning.)

Base Size	Dimensions in inches								Mtg. Holes (No.- Size)	Cat. No.	Max. O.D. Cable (in.)	Shpg. Wt. lbs.
	A	B	C	D	E	F	G	H				
3	3 1/16	2 5/8	1 7/8	1 5/8	23/32	3/8	1	1 5/8	4-----3/8"	WSV31	1 3/8	2
4	5 9/16	4 3/4	2 7/8	2 9/16	1	1/16	1	1 7/8	6-----7/16"	WSV41	2 5/16	4
5	7 3/16	6 1/8	3 3/8	3 9/16	1 1/2	1/16	1	2 1/4	6-----9/16"	WSV51	3 5/16	6

OPTION: If conical end cut to size at factory add **\$53.**

List Price

Base Size	Untinned	Tinned (G1)
3	\$405	\$405
4	\$479	\$543
5	\$693	\$797



RS STUFFING BOX

Stuffing box fittings are available in aluminum or bronze with gland nut, two washers and four resistoyl gaskets. The RS fitting is furnished with one hole factory drilled for one single conductor or one multiple conductor cable. (**Please specify the cable diameter.**) (Add suffix G1 to RS number for bronze fitting.)

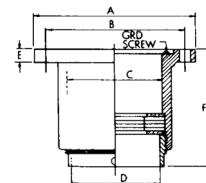
Base Size	Dimensions in inches						Mtg. Holes (No.- Size)	Cat. No.	Max. O.D. Cable (in.)	Shpg. Wt. lbs.
	A	B	C	D	E	F				
3	3 1/2	2 5/8	2 3/16	2	3/8	4 1/8	4-----3/8"	RS33	1 7/8	3
4	5 1/2	4 3/4	3 3/16	3	1/16	4 1/8	6-----7/16"	RS44	2 7/8	4
5	7 1/4	6 1/8	4 1/2	4	1/16	4 1/8	6-----9/16"	RS55	3 7/8	6
6	8 7/16	7 1/4	5 1/2	5	1/16	4 7/8	6-----9/16"	RS66	4 7/8	7

NOTE: No reduction in price if supplied undrilled.

List Price

Base Size	Aluminum	Bronze (G1)	Washer/Gasket*
3	\$636	\$508	\$125
4	\$928	\$898	\$125
5	\$894	\$1334	\$125
6	C.F.	C.F.	C.F.

* Replacement washer/gaskets only.



RSF FLANGED STUFFING BOX

Price includes entrance gaskets and hardware (bolts, nuts, etc.) when purchased with terminator.

Stuffing box fittings are furnished in aluminum as standard with flanged gland nut, two washers and four resistoyl gaskets, and one factory drilled hole. Bronze is also an available option. **(Please specify cable diameter on order.)** (Add suffix G1 to RSF catalog number for bronze fitting.)

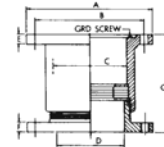
Base Size	Dimensions in inches							Mtg. Holes (No.-Size)	Cat. No.	Max. O.D. Cable (in.)	Shpg. Wt. lbs.
	A	B	C	D	E	F	G				
3	3 1/2	2 5/8	2 3/16	2	3/8	3/8	4 1/4	4-----3/8"	RSF33	1 7/8	4
4	5 1/2	4 3/4	3 3/16	3	7/16	7/16	4 3/8	6-----7/16"	RSF44	2 7/8	5
5	7 1/4	6 1/8	4 1/2	4	7/16	1/2	4 7/16	6-----9/16"	RSF55	3 7/8	7

NOTE: No reduction in price if supplied undrilled.

List Price

Base Size	Aluminum	Bronze (G1)	Washer/Gasket*
3	\$924	\$1160	\$125
4	\$1207	\$1367	\$125
5	\$1489	\$1593	\$125

* Replacement washer/gaskets only.



RSA STUFFING BOX & ARMOR CLAMP

Stuffing box fittings are supplied in aluminum as standard, with combination armor clamp, gland nut, two washers and four resistoyl gaskets. Also furnished with one hole in washers and sealing gaskets factory drilled to diameter of corrugated armor. Bronze is available as an option. **(Specify cable diameters over corrugated armor and over the impervious jacket under the armor when ordering.)** (Add suffix G1 to RSA catalog number for bronze fitting.)

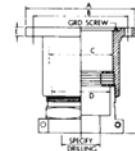
Base Size	Dimensions in inches							Mtg. Holes (No.- Size)	Cat. No.	Max. O.D. Over Armor (in.)	Max. O.D. Over Jacket (in.)	Shpg. Wt. lbs.
	A	B	C	D	E	L						
3	3 1/2	2 5/8	3 3/16	2	3/8	5 1/4		4-----3/8"	RSA33	1 7/8	1 3/4	3
4	5 1/2	4 3/4	3 3/16	3	7/16	5 1/4		6-----7/16"	RSA44	2 7/8	2 3/4	4
5	7 1/4	6 1/8	4 1/2	3 3/4	7/16	5 1/4		6-----9/16"	RSA55	3 5/8	3 1/2	6

NOTE: No reduction in price if supplied undrilled.

List Price

Base Size	Aluminum	Bronze (G1)	Washer/Gasket*
3	C.F.	C.F.	\$125
4	C.F.	C.F.	\$125
5	C.F.	C.F.	\$125

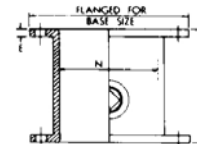
* Replacement washer/gaskets only.



EE ENTRANCE EXTENSION

Entrance extensions are supplied in aluminum and are flanged on each end to accept entrance fittings of the same base size. Bronze is also available as an option. (Add suffix G1 to EE catalog number for bronze fitting.)

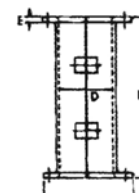
Base Size	Dimensions in inches			Cat. No.	List Price		Shpg. Wt. lbs.
	E	N	L		Al	Bronze (G1)	
3	3/8	2 3/4	4	EE3	\$873	\$934	5
4	1/4	3 1/2	4	EE4	\$1092	\$1155	6
5	9/16	4 1/2	5	EE5	\$1264	\$1366	11
6	9/16	5 1/2	5	EE6	C.F.	C.F.	15



CCE SPLIT CONDUIT EXTENSION

Split conduit extensions are furnished in aluminum as standard and are flanged on each end to accept entrance fitting of the same base size. The two halves of the extension are joined by bolts to permit removal of the pothead for ease of installation. Available in either 10 or 15 inches lengths. Two or more units may be used in series where longer extensions are required. Bronze is available as an option.

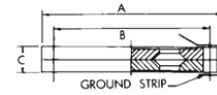
Base Size	Dimensions in inches			Cat. No.	List Price		Shpg. Wt. lbs.
	D	E	L		Al	Bronze (G1)	
3	2 9/16	7/16	10	CC3E-10F	\$527	\$735	9
4	3 3/8	7/16	10	CC4E-10F	\$718	\$795	12
4	3 3/8	7/16	15	CC4E-15F	\$1216	\$1340	16
5	4 3/8	7/16	10	CC5E-10F	\$1185	\$1290	18
5	4 3/8	7/16	15	CC5E-15F	\$1305	\$1442	24
6	5 3/4	7/16	10	CC6E-10F	C.F.	C.F.	20
6	5 3/4	7/16	15	CC6E-15F	C.F.	C.F.	25



DP DOUBLE PLATE STUFFING BOX

Price includes entrance gaskets (two gaskets for DP entrance) and hardware (bolts, nuts, etc.) when purchased with termination.

Type "DP" plates are supplied in aluminum as standard. They are also available in bronze for each size as an option. The DP fitting is furnished with hole(s) factory drilled and necessary tape. **(Please specify cable diameter with order.)** (Add suffix G1 to DP fitting catalog number for bronze fitting.)



Base Size	No. of Holes	Maximum Drilling with "CC" Conduit Coupling (in.)											Without "CC" (in.)
		1	1 ¼	1 ½	2	2 ½	3	3 ½	4	4 ½	5	6	
3	1	1	15/16	1 9/16	2	2 3/8	2 7/16	2 7/16	2 7/16				2 5/8
3	2	9/16	7/16	9/16	7/8	1	1	1	1				1 1/8
3	3	9/16	3/8	1/2	11/16	15/16	15/16	15/16	15/16				1 1/32
3	4	¼	9/16	1/16	5/8	¾	¾	¾	¾				7/8
4	1			1 9/16	2	2 3/8	3	3 3/8	3 3/8	3 3/8	3 3/8		3 7/8
4	2			5/16	7/8	1 1/16	1 5/16	1 ½	1 ½	1 ½	1 ½		1 ¾
4	3			1/2	11/16	15/16	1 3/16	1 3/8	1 3/8	1 3/8	1 3/8		1 19/32
4	4			1/16	5/8	¾	1	1 3/16	1 3/16	1 3/16	1 3/16		1 3/8
5	1						3	3 ½	3 15/16	4 7/16	4 ½	4 ½	4 7/8
5	2						1 5/16	1 ½	1 13/16	2 1/16	2 1/16	2 1/16	2 ¼
5	3						1 3/16	1 3/8	1 5/8	1 7/8	1 7/8	1 7/8	2 1/16
5	4						1	1 3/16	1 7/16	1 5/8	1 5/8	1 5/8	1 13/16
6	1											5 ½	5 5/8
6	2											2 9/16	2 ¾
6	3											2 3/8	2 17/32
6	4											2	2 7/32

* Add suffix digit for No. of cable holes (up to 4).
Example: DP30 is blank & DP33 has 3 holes.

List Price

Base Size	Dimensions in inches			Mtg. Holes (No.- Size)	Cat. No.	Shpg. Wt. lbs.
	A	B	C			
3	3 1/2	2 5/8	7/8	4-----3/8"	DP3	2
4	5 1/2	4 3/4	7/8	6-----7/16"	DP4	2
5	7 1/4	6 1/8	7/8	6-----9/16"	DP5	3
6	8 7/16	7 1/4	1 1/4	6-----9/16"	DP6	6

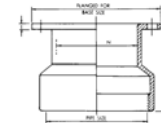
See table corresponding to base size for Max. O.D. Cable.

Base Size	3	4	5	6
Aluminum	\$505	\$611	\$842	C.F.
Bronze	\$562	\$631	\$881	C.F.
Gasket**	\$57	\$57	\$104	C.F.

**Replacement gaskets only (two supplied).

CC CONDUIT COUPLING

Conduit Couplings are supplied in aluminum as standard and are threaded for use on metal conduit. Specify on order if conduit coupling is to be furnished with set screw to hold in place on fiber duct. Bronze is available as an option. (Add suffix G1 to CC catalog number for bronze fitting.)



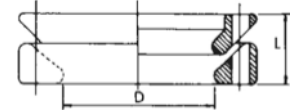
Base Size	Pipe Size (in.)	Catalog. No.	Dimensions in inches			Shpg. Wt. (lbs.)	List Price	
			E	N	L		Al	Bronze (G1)
4	1 1/2	CC414	1/4	3 1/2	2 1/4	2 1/2	\$655	\$885
4	2	CC420	1/4	3 1/2	2 1/4	2 3/4	\$655	\$855
4	2 1/2	CC424	1/4	3 1/2	2 1/2	3 1/2	\$685	\$885
4	3	CC430	1/4	3 1/2	2 3/4	3 3/4	\$685	\$885
4	3 1/2	CC434	1/4	3 1/2	3 1/4	4 1/2	\$694	\$894
4	4	CC440	1/4	3 1/2	3 3/4	6	\$694	\$894
4	4 1/2	CC444	1/4	3 1/2	4 1/4	7	\$756	\$956
4	5	CC450	1/4	3 1/2	4 1/4	8	\$756	\$956
5	3	CC530	3/8	4 5/8	3	6	\$914	\$1114
5	3 1/2	CC534	3/8	4 5/8	3	6 1/2	\$914	\$1114
5	4	CC540	3/8	4 5/8	3	7	\$914	\$1114
5	4 1/2	CC544	3/8	4 5/8	3	8	\$1097	\$1297
5	5	CC550	3/8	4 5/8	4 1/2	10	\$1097	\$1297
5	6	CC560	3/8	4 5/8	5	11	\$1097	\$1297
6	6	CC660	3/8	5 5/8	5 1/4	15	C.F.	C.F.

Price includes base entrance gaskets and hardware (bolts, nuts, etc.) when purchased with termination.

WAF WIRE ARMOR CLAMP

Type "WAF" wire armor clamps are bronze and consist of two mating rings which bolt together to clamp the armor wires.

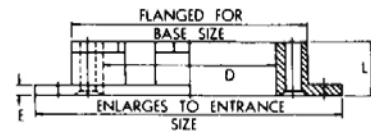
Base Size	Catalog. No.		Cata. No.	Part No.	Shpg. Wt. (lbs.)	List Price
	D	E				
3	2 3/4	1 5/8	WAF31	A5018-35	5	\$664
4	3 1/2	1 5/8	WAF41	A5018-36	6	\$741
5	5	2	WAF51	A5018-37	8	\$1029



BE BASE ENLARGER

Enlargers for base size #3 to #4 and #4 to #5 are bronze. Enlarger for base size #5 to #6 is fabricated from mild steel only.

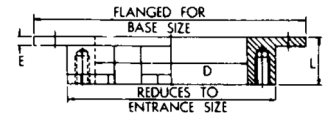
Enlarges Base Size From	Dimensions in inches			Catalog. No.	Shpg. Wt. (lbs.)	List Price	
	D	E	L			Bronze (G1)	Mild Steel
3 to 4	2 3/4	5/8	5/8	BE 34	4	\$779	N/A
4 to 5	4	1/4	1 1/4	BE 45	6	\$779	N/A
5 to 6	5	3/4	3/4	BE 56	14	N/A	C.F.



BR BASE REDUCER

Base reducers are supplied in aluminum as standard. The bottom half of the fitting is drilled and tapped to receive entrance fitting of a smaller base size. Bronze is available as an option. (Add suffix G1 to BR fitting catalog number for bronze fitting.)

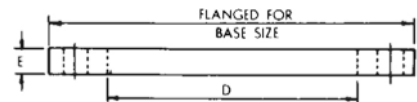
Reduces Base Size From	Dimensions in inches			Catalog. No.	Part No.	Shpg. Wt. (lbs.)	List Price	
	D	E	L				Bronze (G1)	AL
4 to 3	2 3/4	11/16	11/16	BR 43	A3017-2	4	\$942	\$908
5 to 3	2 3/4	1/4	7/8	BR 53	A3017-11	5	\$942	\$908
5 to 4	4	1/4	1 1/4	BR 54	A3017-3	6	\$942	\$908
6 to 5	5	1/2	1 1/2	BR 65	B1178-2	14	C.F.	C.F.



EF ENTRANCE FLANGE INSULATOR

Type "EF" flange insulators are normally furnished in Bakelite® with Bakelite® bushings for the cap screws. Also available in PLEXIGLASS G®. Consult factory. Special WS is required when used with EF entrance flange insulator. See note under WS wiping sleeve.

Base Size	Catalog. No.		Cata. No.	Shpg. Wt. (lbs.)	List Price
	D	E			
3	2 9/16	3/4	EF 13	1	\$700
4	3 3/4	3/4	EF 14	1 1/2	\$700
5	4 1/2	3/8	EF 15	2	\$1052
6	6	3/8	EF 16	3	C.F.

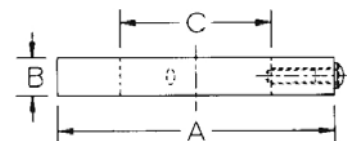


ACC ARMOR CLAMPING COLLAR

Armor clamp collars are of aluminum, for clamping on corrugated armor cable. The clamping collar is fastened by using set screws which are tightened into the crevices of the armor. (Please specify cable diameter over corrugated armor with order.) Units also available in bronze. (Add suffix G1 to ACC fitting catalog number for bronze fitting.)

Base Size	Dimensions in inches			Mtg. Holes (No.- Size)	Cat. No.	Max. O.D. over armor (in.)	Shpg. Wt. (lbs.)
	A	B	C max.				
3	3 1/2	3/4	2 1/16	4---3/8"	ACC31	1 15/16	2
4	5 1/2	3/4	3 7/8	6---7/16"	ACC41	3 3/4	4
5	7 1/4	3/4	4 7/8	6---9/16"	ACC51	4 3/4	6

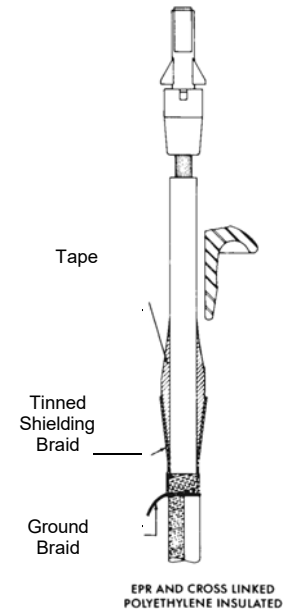
Base Size	List Price	
	Al	Bronze (G1)
3	\$312	\$503
4	\$383	\$655
5	\$675	\$851



STRESS CONE KITS

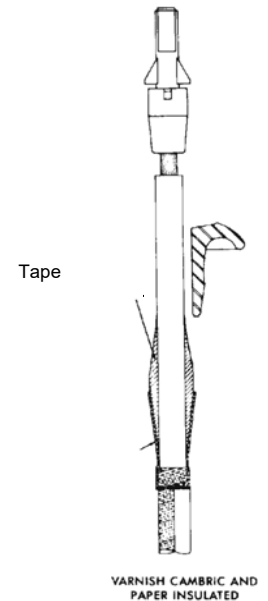
Varnished Cambric or Paper Insulated

Cable	Cond. Size AWG/KCM (mm ²)	15kV		25kV		34.5V	
		Cat. No.	Price	Cat. No.	Price	Cat. No.	Price
(1) 1/C	1/0 (53)	1S5	\$95	2S10	\$129	2S10	\$121
	500 (253)	1S10	\$97	2S10	\$129	3S15	\$155
	1000 (507)	1S10	\$97	2S10	\$129	3S15	\$155
	2000 (1013)	2S10	\$129	2S15	\$129	4S20	\$190
(1) 3/C or (3) 1/C	1/0 (53)	2S15	\$129	3S20	\$164	6S30	\$312
	500 (253)	3S20	\$164	4S25	\$199	7S35	\$345
	1000 (507)	3S20	\$164	5S30	\$248	8S40	\$397
	2000 (1013)	4S30	\$242	6S40	\$374	10S50	\$467



Cross Linked Polyethylene or EPR Insulated

Cable	Cond. Size AWG/KCM (mm ²)	15kV		25kV		34.5V	
		Cat. No.	Price	Cat. No.	Price	Cat. No.	Price
(1) 1/C	1/0 (53)	1D10	\$85	2D10	\$85	3D15	\$105
	500 (253)	1D10	\$85	2D15	\$85	3D15	\$105
	1000 (507)	2D10	\$85	2D15	\$85	4D20	\$138
	2000 (1013)	2D15	\$85	3D20	\$137	4D25	\$138
(1) 3/C or (3) 1/C	1/0 (53)	2D20	\$85	4D25	\$137	7D35	\$219
	500 (253)	3D25	\$117	5D35	\$169	9D45	\$274
	1000 (507)	4D30	\$145	6D40	\$205	10D55	\$314
	2000 (1013)	5D40	\$176	8D50	\$259	12D65	\$374



COMPOUND AND INSULATING OIL

Catalog No.	Description	Metal Container Size	Part No.	List Price
220	Novoid A	1 Gal.	A5095 0001 B00	\$145
		2 Gal.	A5095 0001 C00	\$170
		5 Gal.	A5095 0001 D00	\$345
222	Novoid X	1 Gal.	A5095 0005 B00	C.F.
219	Insulating Oil	1 Gal.	S2190 0000 001	\$105
		5 Gal.	S2190 0000 002	\$315
224	Polyvis 305H	1 Gal.	22400 0000 001	\$140
		2 Gal.	22400 0000 002	\$216
		5 Gal.	22400 0000 003	\$454

COMPOUND SELECTOR CHART

TYPE OF CABLE INSULATION	NOVOID A Note 1	NOVOID X	NOVOID 224
Paper Insulated, Lead Covered P.I.L.C.	Yes	Yes Note 3	No
Varnish Cambric, Lead Covered V.C.L.C.	Yes	Yes Note 3	No
Butyl Rubber I.I.R. Type	Yes Note 4	No	No
Cross Linked Polyethylene X-L Poly.	Yes	No	Yes
Ethylene Propylene Rubber E.P.R.	Yes Note 4	No	Yes
Hi-Molecular Weight Poly	No	No	Yes
Kerite Insulation Permashield Type	Yes	No	No

Note 1: For temperatures up to 40°C (104°F).

Note 2: For abnormal temperatures above 40°C (104°F).

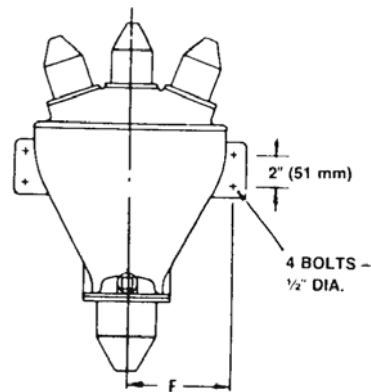
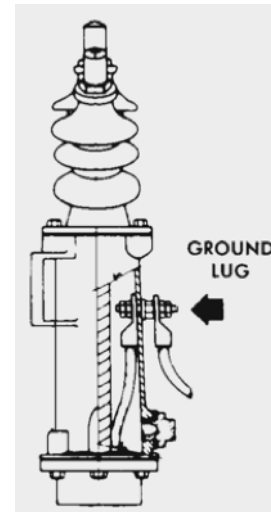
Note 3: Not recommended for terminations and cable heads operating at 23kV and above where temperature may fall below -12°C (+10°F), or 15kV and below, where temperature may fall below -24°C (-10°F). No temperature limitation for compound used in joints.

Note 4: Maximum pouring temperature not to exceed 150°C (302°F).

GROUND LUGS

Ground lugs are used on 3/C terminations to accommodate a fourth conductor when one of the conductors is a grounded neutral. The maximum neutral conductor size is 250 KCM. To order, add the suffix "GL" to the catalog number of the 3/C termination selected. **(Please specify conductor size with order.)**

Max. Cable	Part No.	List Price
1/0	A60930001000	\$273
250 KCM	A60930003000	\$454



SPREADER HEADS

Spreader heads are used in conjunction with single conductor terminations when a greater phase-to-phase aerial spacing than provided is required by multi-conductor terminations. Spreader heads can be oil or compound filled. For applicable compound see selector chart on page 16.

Max. Dia. 3/C Cable in. (mm)	Catalog No.	Body Symbol	Body "F" in. (mm)	Wiping Sleeves Body Base	Wiping Sleeves Lid Top	Approx. Cmpd. Req'd. Gals. (L)	Approx. Shpg. Wt. Lbs. (kg)	List Price
2 3/4 (70)	H4B3	H4C	6 1/2 (165)	WS41	WS31	2 (7.6)	60 (27)	\$4526
3 3/4 (95)	J5B4	J5C	7 3/4 (197)	WS51	WS41	3 1/2 (13.3)	80 (36)	\$6318

Price includes 4 wiping sleeves. Compound is required and must be priced separately.

Sodertite Terminations

PRICE WORK SHEET

Refer to pages 29-36 for appropriate catalog numbers and prices.

Cable Specifications: You need the following data to price correctly.

- | | |
|----------------------------|---------------------------|
| 1) System voltage: | EXAMPLE |
| 2) Insulation material: | 1) 15kV |
| 3) Insulation O.D.: | 2) XPLE (Cross Link Poly) |
| 4) No. of conductors: | 3) 2.25 inches |
| 5) Conductor size / shape: | 4) Three conductor |
| 6) Conductor material: | 5) 500 KCM concentric |
| 7) Shielding material: | 6) Copper |
| 8) Jacket material: | 7) Copper tape |
| 9) Jacket O.D.: | 8) PVC |
| 10) Ground Wire: | 9) 3.08-inch O.D. |
| | 10) #1 AWG |

Price Workup

- | | |
|--|--------------------------------------|
| 1) Terminator Catalog Number: _____
Based on voltage, conductor size, no. of conductors, cable semi-con O.D., conductor material and mounting configuration (bracket/ flange/equipment). | List Price: _____ |
| 2) Connector Catalog Number: _____
Based on conductor size and shape.
Multiply by number of phases | List Price: _____ |
| 3) Aerial Lug Catalog Number: _____
Based on conductor material and size.
Multiply by number of phases. | List Price: _____ |
| 4) Stress Cone Kit Number: _____
Based on cable insulation, conductor size and system voltage. Multiply by number of phases. | List Price: _____ |
| 5) Compound Type: _____
Based on cable insulation and ambient operating temperatures. Specify thermometers if required. | List Price: _____ |
| 6) Mounting Bracket Catalog Number: _____
Based on application. | List Price: _____ |
| 7) Entrance Fitting: _____
Based on cable construction. | List Price: _____ |
| 8) Adders: _____
Note specific price pages for appropriate adders. | List Price: _____ |
| | Total List: _____ |
| | Multiplier: _____ |
| | Book Price: _____ |
| | Discount: _____ |
| | Special Shipping Requirements: _____ |
| | Total Price: _____ |

Sodertie Terminations

FOR COMPOUND, OIL OR GAS FILLING

List prices are for copper, single conductor cable and include porcelain, wiping sleeve entrance fitting, aluminum mounting bracket for ST type termination and internal solder type connector. Aluminum cables require compression style connectors (see adders). Required and must be priced separately: Stress cone kits, aerial lugs and insulating compound.

NOTE: For aluminum cable over 250 kcmil, use the next larger size termination for correct internal clearances.

1/C BRACKET MOUNTED, STYLE ST

With aluminum mounting bracket.

KV	Max. Cond. Size KCM (mm ²)	Catalog. No.	Approx. Shpg. Wt. Lb (Kg)	Approx. Comp'd Req'd Gal (L)	List Price
15 (110kV BIL)	250 (127)	ST172E	22 (10)	¼ (1)	C.F.
	350 (177)	ST175E	25 (11)	¼ (1)	C.F.
	500 (253)	ST175F	28 (13)	⅓ (1.2)	C.F.
	1000 (506)	ST177F	34 (15)	⅓ (1.2)	C.F.
	2000 (1013)	ST179G	48 (22)	½ (1.9)	C.F.
	2500 (1267)	ST170H	74 (34)	¾ (2.8)	C.F.
25 (150kV BIL)	250 (127)	*ST182E	26 (12)	⅓ (1.2)	C.F.
	350 (177)	*ST185E	29 (13)	⅓ (1.2)	C.F.
	500 (253)	ST185F	35 (16)	½ (1.9)	C.F.
	1000 (506)	ST187G	50 (23)	⅔ (2.5)	C.F.
	1500 (760)	ST189G	59 (27)	⅔ (2.5)	C.F.
	2000 (1013)	ST189H	64 (29)	1 (3.8)	C.F.
	2500 (1267)	ST180H	80 (36)	1 (3.8)	C.F.
34.5 (200kV BIL)	500 (253)	ST195G	46 (21)	¾ (2.8)	C.F.
	750 (380)	ST197G	52 (24)	¾ (2.8)	C.F.
	1000 (506)	ST197H	62 (28)	1 ¼ (4.7)	C.F.
	2000 (1013)	ST199H	72 (33)	1 ¼ (4.7)	C.F.
	2500 (1267)	ST190J	125 (57)	2 (7.6)	C.F.
46 (250kV BIL)	500 (253)	ST105H	66 (30)	2 (7.6)	C.F.
	1000 (506)	ST107H	72 (33)	2 (7.6)	C.F.
	1000 (506)	ST107J	120 (54)	2 ½ (9.5)	C.F.
	2000 (1013)	ST109J	135 (61)	2 ½ (9.5)	C.F.



For gas filled terminations use:
46kV rating for 34.5kV operation
**Consult factory for 46kV operation.

* Ordinarily for over insulated 15kV outdoor operation. Next larger bore porcelain (ST185F) recommended for 23kV actual operation for 500KCM and below.

FOR COMPOUND, OIL OR GAS FILLING

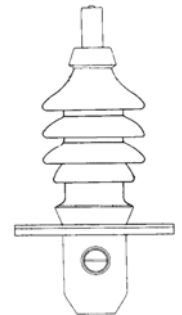
List prices are for copper, single conductor cable and include porcelain, wiping sleeve entrance fitting, aluminum mounting bracket for ST type termination and internal solder type connector. Aluminum cables require compression style connectors (see adders). Required and must be priced separately: Stress cone kits, aerial lugs and insulating compound.

NOTE: For aluminum cable over 250 kcmil, use the next larger size termination for correct internal clearances.

1/C FLANGE MOUNTED, STYLE STR

Applicable in oil and air insulated compartments. Includes mounting flange with drilled holes for inside or outside mounting and gasket.

KV	Max. Cond. Size KCM (mm ²)	Catalog. No.	Approx. Shpg. Wt. Lb (Kg)	Approx. Comp'd Req'd Gal (L)	List Price
15 (110kV BIL)	250 (127)	STR172E	26 (12)	¼ (1)	C.F.
	350 (177)	STR175E	29 (13)	¼ (1)	C.F.
	500 (253)	STR175F	33 (15)	½ (1.2)	C.F.
	1000 (506)	STR177F	39 (18)	½ (1.2)	C.F.
	2000 (1013)	STR179G	55 (25)	½ (1.9)	C.F.
	2500 (1267)	STR170H	84 (38)	¾ (2.8)	C.F.
Alternate: 15, corrugated porcelain. Square Flange.	250 (127)	SNTR172E	26 (12)	¼ (1)	C.F.
	350 (177)	SNTR175E	29 (13)	¼ (1)	C.F.
25 (150kV BIL)	250 (127)	STR182E	30 (14)	⅓ (1.2)	C.F.
	500 (253)	STR185F	40 (18)	½ (1.9)	C.F.
	1000 (506)	STR187G	57 (26)	⅔ (2.5)	C.F.
	1500 (760)	STR189G	66 (30)	¾ (2.5)	C.F.
	2000 (1013)	STR189H	74 (34)	1 (3.8)	C.F.
	2500 (1267)	STR180H	90 (41)	1 (3.8)	C.F.
34.5 (200kV BIL)	500 (253)	STR195G	53 (24)	¾ (2.8)	C.F.
	750 (380)	STR197G	59 (27)	¾ (2.8)	C.F.
	1000 (506)	STR197H	72 (33)	1 ¼ (4.7)	C.F.
	2000 (1013)	STR199H	82 (37)	1 ¼ (4.7)	C.F.
	2500 (1267)	STR190J	125 (57)	2 (7.6)	C.F.
46 (250kV BIL)	500 (253)	STR105H	76 (35)	2 (7.6)	C.F.
	1000 (506)	STR107H	82 (37)	2 (7.6)	C.F.
	1000 (506)	STR107J	120 (54)	2 ½ (9.5)	C.F.
	2000 (1013)	STR109J	135 (61)	2 ½ (9.5)	C.F.



RST Option

Includes tapped holes
for inside mounting only.

For gas filled terminations use: 46kV rating for 34.5kV operation.

* Consult factory for 46kV operation.

FOR COMPOUND, OIL OR GAS FILLING

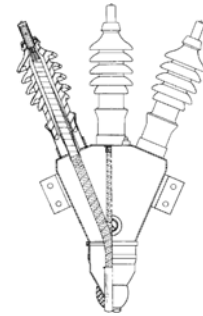
List prices are for copper, three conductor cable and include diverging porcelain, wiping sleeve entrance fitting and internal solder style connector. Aluminum cables require compression style connectors (see adders).
Required and must be priced separately: Stress cone kits, aerial lugs and insulating compound.

NOTE: For aluminum cable over 250 kcmil, use the next larger size termination for correct internal clearances.

3/C BRACKET MOUNTED, STYLE 'ST'

Shape B with mounting bracket.

KV	Max. Cond. Size KCM (mm ²)	Catalog. No.	Approx. Shpg. Wt. Lb (Kg)	Approx. Comp'd Req'd Gal (L)	List Price
15 (110kV BIL)	250 (127)	ST372E4B	140 (64)	3 ½ (13)	C.F.
	500 (253)	ST375F5B	180 (82)	5 (19)	C.F.
	750 (380)	ST377F5B	200 (91)	5 (19)	C.F.
	1000 (506)	ST377G6B	240 (108)	7 ½ (28)	C.F.
25 (150kV BIL)	250 (127)	ST382E4B	153 (69)	4 (15)	C.F.
	500 (253)	ST385F5B	210 (95)	5 ½ (21)	C.F.
	1/0 (53)	ST382E6B	200 (91)	7 (27)	C.F.
	350 (177)	ST385F6B	225 (102)	7 (27)	C.F.
	500 (253)	ST385G6B	250 (114)	8 ½ (32)	C.F.
	750 (380)	ST387G6B	270 (123)	8 ½ (32)	C.F.
34.5 (200kV BIL)	500 (253)	ST395G6B	260 (118)	8 ½ (32)	C.F.

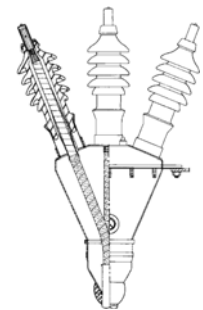


NOTE: For 15kV and 25kV compound, oil or gas.
For 34.5kV compound, oil filled only. Consult factory for gas filled.

3/C FLANGE MOUNTED, STYLE 'RST'

Shape B with flange for compartments. Applicable in oil and air insulated compartments. Includes mounting flange and gasket.

KV	Max. Cond. Size KCM	Catalog. No.	Approx. Shpg. Wt. Lb (Kg)	Approx. Comp'd Req'd Gal (L)	List Price
15 (110kV BIL)	250 (127)	RST372E4B	150 (68)	3 ½ (13)	C.F.
	500 (253)	RST375F5B	185 (84)	5 (19)	C.F.
	750 (380)	RST377F5B	205 (93)	5 (19)	C.F.
	1000 (506)	RST377G6B	220 (100)	7 ½ (28)	C.F.
25 (150kV BIL)	1/0 (53)	RST382E4B	160 (73)	4 (15)	C.F.
	350 (177)	RST385F5B	215 (98)	5 ½ (21)	C.F.
	500 (253)	RST385G6B	260 (118)	7 ½ (28)	C.F.
	750 (380)	RST387G6B	280 (127)	7 ½ (28)	C.F.
34.5 (200kV BIL)	500 (253)	RST395G6B	270 (123)	7 ½ (28)	C.F.



NOTE: For 15kV and 25kV, compound, oil or gas.
For 34.5kV, compound, oil filled only. Consult factory for gas filled.

COMPRESSION CONNECTORS

Cable	Hood Size*	Max. KCM	Mat'l.	Part No.	List Price
Cu	2	250	CU	A13230700000	\$1040
	5	500	CU	A13230702000	\$1040
	7	1000	CU	A13230704000	\$1075
	9	2000	CU	A13230706000	\$1190
	0	2500	CU		C.F.
Al	2	250	AL	A13230701000	C.F.
	5	500	AL	A13230703000	C.F.
	7	1000	AL	A13230705000	C.F.
	9	2000	AL	A13230707000	C.F.

For Copper Cable: Drilled solder connectors are included as standard with terminators.

For Aluminum Cable: Compression connectors **must** be furnished.

Adders for compression connectors to terminators are above

REPLACEMENT SOLDER CONNECTORS

(Drilled) Replacement price only. Included as standard.

Hood Size *	Max. KCM	Part No.	List Price
2	250	A13230046000	\$810
5	500	A13230029000	\$847
7	1000	A13230032000	\$868
9	2000	A13230037000	\$1202
0	2500	A13230039000	\$1529

* Reference termination catalog number to match hood size code per the following:

ST terms- fifth digit

STR or RST terms- sixth digit

SNTR terms- seventh digit

NOTE: Order three for 3/C terminations. Exact cable size must be specified with order.

AERIAL LUGS (Priced Extra)

Copper aerial lugs are standard. Silver or tin plated lugs are available. See options below.

(Style 4) Clamp Type

Max. Cond. Size KCM (mm ²)	Hood O.D. (in.)	Part No.	Aerial Cond. Range	Approx. Shpg. Wt. Lb. (kg)	List Price
250 (127)	7/8	A5076-12	#6 AWG to 250 KCM	4 (1.8)	\$436
500 (253)	1 1/8	A5076	#2 AWG to 500 KCM	4 (1.8)	\$516
1000 (507)	1 1/2	A5076-1	600 KCM to 1000 KCM	4 (1.8)	\$505
2000 (1013)	2 1/8	A5076-13	1000 KCM to 1500 KCM	4 (1.8)	\$1068

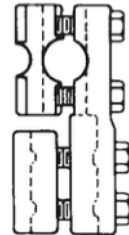
OPTIONS: For silver plating, add \$186. For tin plating, add \$99.

(Style 18) Horizontal Flat Bus Type

Max. Cond. Size KCM (mm ²)	Hood O.D. (in.)	Part No.	Approx. Shpg. Wt. Lb. (kg)	List Price
250 (127)	7/8	A5076-106	1 (.45)	\$477
500 (253)	1 1/8	A5076-82	1 3/4 (.80)	\$489
1000 (507)	1 1/2	A5076-102	3 1/2 (1.6)	\$589
2000 (1013)	2 1/8	A5076-105*	5 (2.3)	\$787
2500 (1267)	2 3/4	A5076-140	6 (2.7)	C.F.

* A5076-105 has an offset flat bus pad dimensioned A x C

OPTIONS: For silver plating, add \$166. For tin plating, add \$99.

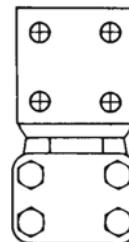


(Style 8) Vertical Flat Bus Type

Max. Cond. Size KCM (mm ²)	Hood O.D. (in.)	Part No.	Approx. Shpg. Wt. Lb. (kg)	Holes (No.)	List Price
250 (127)	7/8	A5076-14	1 3/4 (80)	7/16 (2)	\$259
500 (253)	1 1/8	A5076-15	2 1/2 (1.1)	7/16 (2)	\$329
1000 (507)	1 1/2	A5076-16	4 1/2 (2.0)	9/16 (4)	\$797
2000 (1013)	2 1/8	A5076-11	12 (5.4)	9/16 (4)	\$856
2500 (1267)	2 3/4	A5076-17	14 (6.4)	9/16 (4)	\$1169

OPTIONS: For silver plating, add \$166.
For tin plating, add \$99.

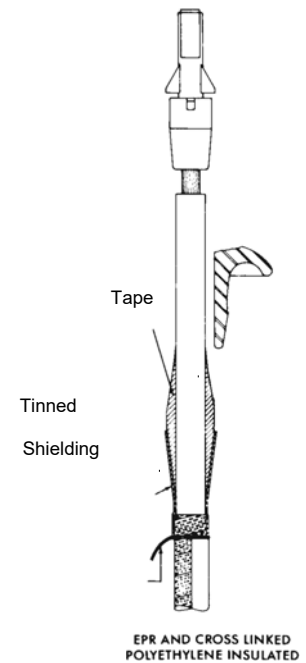
4-hole shown



STRESS CONE KITS

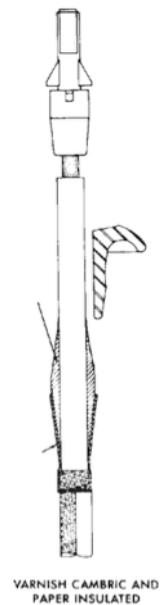
Varnished Cambric or Paper Insulated

Cable	Cond. Size AWG/KC M (mm ²)	15kV		25kV		34.5V	
		Cat. No.	Price	Cat. No.	Price	Cat. No.	Price
(1) 1/C	1/0 (53)	1S5	\$95	2S10	\$129	2S10	\$121
	500 (253)	1S10	\$97	2S10	\$129	3S15	\$155
	1000 (507)	1S10	\$97	2S10	\$129	3S15	\$155
	2000 (1013)	2S10	\$129	2S15	\$129	4S20	\$190
(1) 3/C or (3)1/C	1/0 (53)	2S15	\$129	3S20	\$164	6S30	\$312
	500 (253)	3S20	\$164	4S25	\$199	7S35	\$345
	1000 (507)	3S20	\$164	5S30	\$248	8S40	\$397
	2000 (1013)	4S30	\$242	6S40	\$374	10S50	\$467



Cross Linked Polyethylene or EPR Insulated

Cable	Cond. Size AWG/KCM (mm ²)	15kV		25kV		34.5V	
		Cat. No.	Price	Cat. No.	Price	Cat. No.	Price
(1) 1/C	1/0 (53)	1D10	\$85	2D10	\$85	3D15	\$105
	500 (253)	1D10	\$85	2D15	\$85	3D15	\$105
	1000 (507)	2D10	\$85	2D15	\$85	4D20	\$138
	2000 (1013)	2D15	\$85	3D20	\$137	4D25	\$138
(1) 3/C or (3) 1/C	1/0 (53)	2D20	\$85	4D25	\$137	7D35	\$219
	500 (253)	3D25	\$117	5D35	\$169	9D45	\$274
	1000 (507)	4D30	\$145	6D40	\$205	10D55	\$314
	2000 (1013)	5D40	\$176	8D50	\$259	12D65	\$374



STRESS CONE KITS (CONT'D)

Varnished Cambric or Paper Insulated-Oil Filled

Cable	Cond. Size AWG/KCM (mm ²)	15kV		25kV		34.5kV		46kV	
		Cat. No.	Price	Cat. No.	Price	Cat. No.	Price	Cat. No.	Price
(1) 1/C	250 (127)	10L01	\$546	10L10	\$668	15L01	\$857	15L10	\$743
	500 (253)	10L01	\$546	10L01	\$668	15L01	\$857	15L10	\$743
	1000 (507)	10L01	\$546	10L01	\$668	15L01	\$857	15L10	\$743
	2000 (1013)	10L01	\$546	15L01	\$857	15L01	\$857	20L10	\$743
	2500 (1267)	10L01	\$546	15L01	\$857	15L01	\$857	-	-
(1) 3/C	1/0 (53)	15L10	\$743	25L11	\$859	30L11	\$1084	-	-
	500 (253)	20L10	\$743	25L11	\$859	30L11	\$1084	-	-
	1000 (507)	25L10	\$743	-	-	-	-	-	-

Varnished Cambric or Paper Insulated- Gas Filled

Cable	Cond. Size AWG/KCM (mm ²)	15kV		25kV		34.5kV		46kV	
		Cat. No.	Price	Cat. No.	Price	Cat. No.	Price	Cat. No.	Price
(1) 1/C	250 (127)	10L10	\$668	10L10	\$668	15L20	\$1150	15L20	\$1150
	500 (253)	10L10	\$668	10L10	\$668	15L20	\$1150	15L20	\$1150
	1000 (507)	10L10	\$668	10L10	\$668	15L20	\$1150	15L20	\$1150
	2000 (1013)	10L10	\$668	10L10	\$668	15L20	\$1150	20L20	\$1104
	2500 (1267)	10L10	\$668	10L10	\$668	15L20	\$1150	-	-
(1) 3/C	1/0 (53)	15L10	\$743	20L20	\$1104	25L20	\$1107	-	-
	500 (253)	20L10	\$743	25L20	\$1104	25L20	\$1107	-	-
	1000 (507)	25L10	\$743	-	-	-	-	-	-

COMPOUND AND INSULATING OIL

Catalog No.	Description	Metal Container Size	Part No.	List Price
220	Novoid A	1 Gal.	A5095 0001 B00	\$145
		2 Gal.	A5095 0001 C00	\$170
		5 Gal.	A5095 0001 D00	\$345
222	Novoid X	1 Gal.	A5095 0005 B00	C.F.
219	Insulating Oil	1 Gal.	S2190 0000 001	\$105
		5 Gal.	S2190 0000 002	\$315
224	Polyvis 305H	1 Gal.	22400 0000 001	\$140
		2 Gal.	22400 0000 002	\$216
		5 Gal.	22400 0000 003	\$454

COMPOUND SELECTOR CHART

TYPE OF CABLE INSULATION	NOVOID A Note 1	NOVOID X	NOVOID 224
Paper Insulated, Lead Covered P.I.L.C.	Yes	Yes Note 3	No
Varnish Cambric, Lead Covered V.C.L.C.	Yes	Yes Note 3	No
Butyl Rubber I.I.R. Type	Yes Note 4	No	No
Cross Linked Polyethylene X-L Poly	Yes	No	Yes
Ethylene Propylene Rubber E.P.R.	Yes Note 4	No	Yes
Hi-Molecular Weight Poly	No	No	Yes
Kerite Insulation Permashield Type	Yes	No	No

Note 1: For temps. up to 40°C (104°F).

Note 2: For abnormal temps. above 40°C (104°F).

Note 3: Not recommended for terminations and cableheads operating at 23kV and above where temp. may fall below -12°C (+10°F), or 15kV and below, where temp. may fall below -24°C (-10°F). No temp. limitation for compound used in joints.

Note 4: Maximum pouring temp. not to exceed 150°C (302°F)

BRACKETS (1/C)

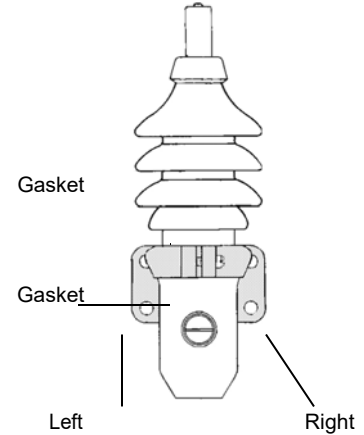
Aluminum bracket is included as standard with termination. Bronze brackets are optional. Brackets include two gaskets and hardware.

Bronze Bracket (Adder)

Add to termination price.

Shank* Size	Part No.	Description (half)	List Price
E	B20410005A00	Right	\$447
	B20410006A00	Left	
F	B20410007J00	Right	\$480
	B20410008J00	Left	
G	B20410009D00	Right	\$480
	B20410010D00	Left	
H	B20410011A00	Right	\$755
	B20410012A00	Left	

* Refers to last digit in termination catalog number.



REPLACEMENT BRACKETS (1/C)

Includes two gaskets and hardware.

Aluminum				Bronze			
Shank Size *	Part No.	Description (Half)	List Price	Shank Size *	Part No.	Description (Half)	List Price
E	B20410005000	Right	\$420	E	B20410005A00	Right	\$867
	B20410006000	Left			B20410006A00	Left	
F	B20410007000	Right	\$462	F	B20410007J00	Right	\$942
	B20410008000	Left			B20410008J00	Left	
G	B20410009000	Right	\$504	G	B20410009D00	Right	\$984
	B204100010000	Left			B204100010D00	Left	
H	B204100011000	Right	\$682	H	B204100011A00	Right	\$1437
	B204100012000	Left			B204100012A00	Left	

* Refers to last digit in terminator catalog number.

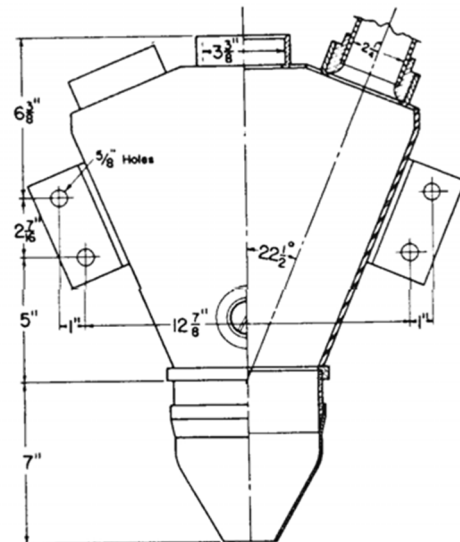
Spreader Heads

Spreader heads are used in conjunction with single conductor terminations when a greater phase-to-phase aerial spacing is required, than provided by multi-conductor terminations. Spreader heads can be oil or compound filled. For applicable compound see selector chart on page 7.

Max. O.D. Cable In. (mm)	Catalog No.	Approx. Compound req'd Gal. (L)	Approx. Shpg. Wt. Lbs. (Kg)	List Price*
2 (51)	SH6D	2 (7)	30 (14)	\$6921
3 (76)	SH7D	5 (19)	55 (25)	\$7997
2 (51)	SW4B	3 (11)	75 (34)	\$7889

* Price includes 4 wiping sleeves.

Compound is required and must be priced separately.



ENTRANCES

RS Entrances (1/C) (Adder)

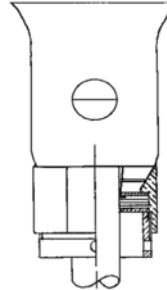
Shank Size *	List Price	
	Aluminum	Bronze
E	C.F.	C.F.
F	C.F.	C.F.
G	C.F.	C.F.
H	C.F.	C.F.
J	C.F.	C.F.

* Refers to last digit in the termination catalog number.

RS Entrances (3/C) (Adder)

Flange Size **	List Price	
	Aluminum	Bronze
4B	C.F.	C.F.
5B	C.F.	C.F.
6B	C.F.	C.F.

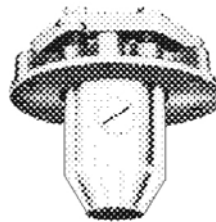
** Refers to last two digits in the termination catalog number.



RST Flanges (1/C) (Adder)

Shank Size *	List Price	
	Aluminum	Bronze
E	C.F.	C.F.
F	C.F.	C.F.
G	C.F.	C.F.
H	C.F.	C.F.
J	C.F.	C.F.

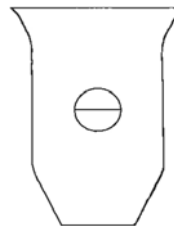
* Refers to last digit in the termination catalog number.



Extra Long (6") Copper tinned Wiping Sleeve (Adder) For 1/C termination only

Shank Size *	List Price
E	C.F.
F	C.F.
G	C.F.
H	C.F.
J	C.F.

* Refers to last digit in the termination catalog number.



MISCELLANEOUS OPTIONS (Adders)

Description	List Price
Centering Plugs	\$158
Lead Wedges	\$59
Fittings for Gas Filled Terminators	
1/C	\$728
3/C	\$951

Tape Splice Kits

To obtain prices for all Tape Splice Kits, please consult factory.

For 1/C PILC Cable

Splice kit for paper or varnished cambric insulated lead covered cables. Includes lead sleeve, #222 Novoid X or #220 Novoid A compound, dry cotton tape, saturated flax twine, solder (40/60), stearine candle, V.D.G. tapes, paper pasters, solder (50/50), tinned shielding braid, split tinned solder copper connectors and saturated webbing. Copper or aluminum compression connectors are available.

For 3/C PILC Cable

Splice kit for paper or varnished cambric insulated lead covered cables. Includes lead sleeve, #222 Novoid X or #220 Novoid A compound, dry cotton tape, saturated flax twine, solder (40/60), stearine candle, V.D.G. tapes, paper pasters, solder (50/50), tinned shielding braid, split tinned solder copper connectors and saturated webbing. Copper or aluminum compression connectors are available.

Tape Splices available:

- 2 WAY, 1/C SHIELDED OR UNSHEILDED*
 - 8.7 kV U.N. or 12 kV G.N.
- 2 WAY, 1/C SHIELDED or UNSHIELDED*
 - 12 kV U.N. or 15 kV G.N.
- 2 WAY, 1/C SHIELDED OR UNSHIELDED*
 - 15 kV U.N. or 20 kV G.N.
- 2 WAY, 1/C SHIELDED OR UNSHIELDED*
 - 27 kV U.N. or 35 kV G.N.
- 2 WAY, 3/C BELTED**
 - 15 kV U.N. or 20 kV G.N. Concentric Round
- 2 WAY, 3/C BELTED**
 - 15 kV U.N. or 20 kV G.N. Compact Sector
- 2 WAY, 3/C SHIELDED**
 - 12 kV U.N. or 15 kV G.N. Concentric Round
- 2 WAY, 3/C SHIELDED**
 - 12 kV U.N. or 15 kV G.N. Compact Sector
- 2 WAY, 3/C SHIELDED**
 - 15 kV U.N. or 20 kV G.N. Concentric Round
- 2 WAY, 3/C SHIELDED**
 - 15 kV U.N. or 20 kV G.N. Compact Sector
- 2 WAY, 3/C SHIELDED**
 - 17 kV U.N. or 25 kV G.N. Concentric Round
- 2 WAY, 3/C SHIELDED**
 - 17 kV U.N. or 25 kV G.N. Compact Sector
- 2 WAY, 3/C SHIELDED**
 - 25 kV U.N. or 33 kV G.N. Concentric Round
- 2 WAY, 3/C SHIELDED**
 - 25 kV U.N. or 33 kV G.N. Compact Sector
- 2 WAY, 3/C SHIELDED**
 - 27 kV U.N. or 35 kV G.N. Concentric Round
- 2 WAY, 3/C SHIELDED**
 - 27 kV U.N. or 35 kV G.N. Compact Sector

FIGURE 1- 2 Way,
Single Conductor

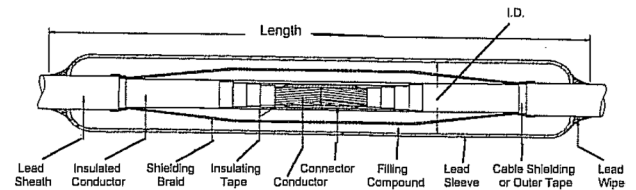
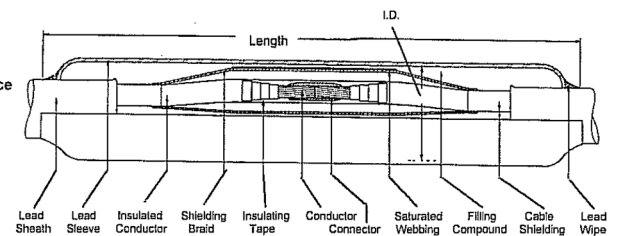


FIGURE 2- 2 Way,
Three Conductor Splice



*For typical 1/C splice configuration see figure 1 on page 2.

**For typical 3/C splice configuration see figure 2 on page 2.

Tape Slice Kits

For 3/C PILC Cable

PROTECTION KIT

For protecting in process splices & terminations from moisture

Catalog No. 750001..... List Price \$62.

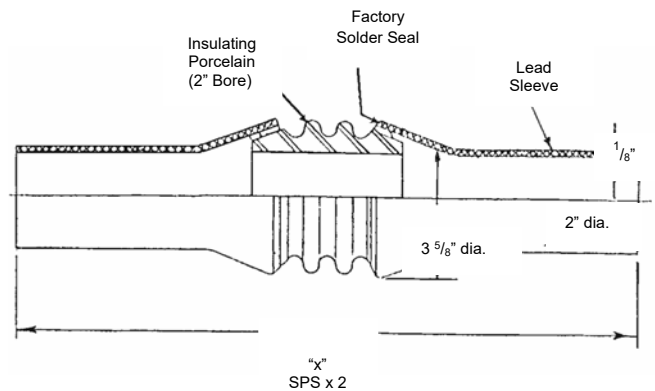
P.N. A5053 0003 000

SOLDERED PORCELAIN INSULATING SLEEVES

Catalog No. SPS 2..... List Price \$1058.

Drawing B5072 0001 000

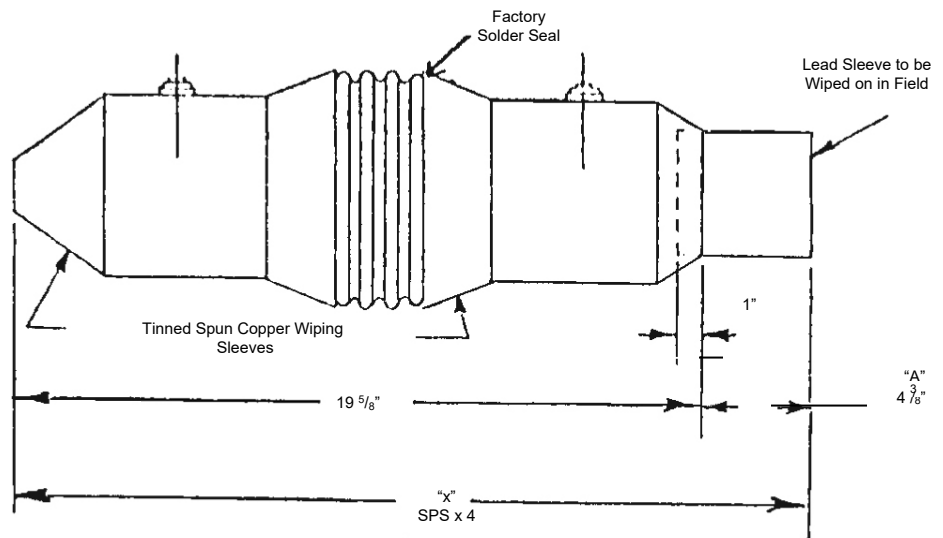
X= 12 to 36 inches. Specify length with order.



Catalog No. SPS 4..... List Price \$2763.

Drawing B5072 0003 000

X= Max. 32 inches. Specify length with order.

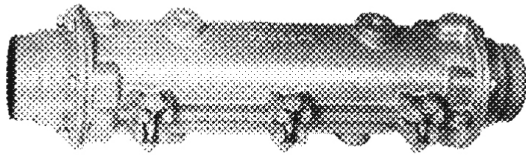


Splice Boxes

TYPE E

Catalog number includes a split cast iron box with hardware, two filling holes with gasketed plugs and wiping sleeve entrance. Compound and splice kits are required and must be purchased separately. For other than wiping sleeve entrances consult factory.

Description	Cat. No.	Max. Cable O.D. 3-1/C	Max. Cable O.D. 3/C	Approx. Wt. lbs. (kg)	Approx. Comp'd Req'd Gal. (L)	List Price
2-Way Straight	E74A	1 ¼ (32)	2 ⅞ (73)	64 (29)	1 ¾ (6.6)	C.F.
	E75	1 ¾ (44)	3 ½ (89)	92 (42)	2 ½ (9.5)	C.F.
	E75A	1 ¾ (44)	3 ½ (89)	140 (64)	4 (15)	C.F.



E TWO WAY STRAIGHT

TYPE OF

For submarine cable. Catalog number includes a threaded galvanized steel pipe, two filling holes with gasketed plugs and cast steel end caps with wire armor clamps. Compound and splice kits are required and must be purchased separately. For other than wire armor clamp entrances consult factory.

Description	Cat. No.	Max. Cable O.D. Ins.	Approx. Wt. lbs. (kg)	Approx. Comp'd Req'd Gal. (L)	List Price
2-Way Straight	OF6	6 (152)	180 (82)	5 (19)	C.F.
	OF8	8 (203)	280 (127)	10 (38)	C.F.



OF TWO WAY STRAIGHT

ATA/ATL Terminations

ATA Refurbishment Work Sheet

Refer to pages 48-49 for appropriate catalog numbers and prices.

Note: Components may be purchased separately without a refurbishment if the customer wants spare parts.

Price Workup

Type of termination to be refurbished: _____

- | | |
|----------------------------------|----------|
| 1) Price of Basic Refurbishment: | \$ _____ |
| 2) Options: | |
| a. Cable Sensitive Kit: | \$ _____ |
| b. Paper Roll: | \$ _____ |
| c. Spare Gaskets: | \$ _____ |
| d. Stress Cone Materials Kit: | \$ _____ |
| 3) Adders: | |
| a. _____ | \$ _____ |
| b. _____ | \$ _____ |

List Price: _____

Options: _____

Adders Total: _____

Multiplier: _____

Discount: _____

Total Price: \$ _____

ATA/ATL Terminations

Basic Refurbishment

Includes evaluation of components, pressure testing, cleaning, painting and freight back to the customer. For 230kV and 345kV capacitor graded terminations, a new capacitor stack is included as well.

After evaluation but prior to shipment, the customer will be issued a quotation for any additional work or parts that would be needed. The customer then has 30 days to decline the additional work or issue a PO. After 30 days, the termination will be sent back.

Description	List Price
69kV, 115kV, 138kV, and 161kV ATA Outdoor Terminations	\$8,845.00
69kV, 115kV, 138kV and 161kV ATL Outdoor Terminations	\$8,845.00
69kV, 115kV, and 138kV ATA-NG Outdoor Terminations	\$8,845.00
230kV and 345kV ATA Outdoor Terminations *Includes new capacitor stack	\$41,375.00
230kV and 345kV ATL Outdoor Terminations *Includes new capacitor stack	\$41,375.00
69kV, 115kV, 138kV, and 161kV ATA GIS Terminations	\$14,750.00
69kV, 115kV, 138kV and 161kV ATL GIS Terminations	\$14,750.00
230kV and 345kV ATA GIS Terminations	\$16,850.00
230kV and 345kV ATL GIS Terminations	\$16,850.00

Paper Roll

Description	List Price
Paper Roll for ATA or ATL 69kV Outdoor Terminations	\$2,750.00
Paper Roll for ATA or ATL 115kV/138kV/161kV Outdoor or GIS Terminations	\$2,895.00
Paper Roll for ATA-NG 115kV/138kV Outdoor Terminations	\$6,350.00
Paper Roll for ATA or ATL 230kV Outdoor Terminations	\$3,225.00
Paper Roll for ATA or ATL 230kV GIS Terminations	\$4,725.00
Paper Rolls for ATA 345kV Outdoor Terminations	\$6,950.00
Paper Roll for ATA 345kV GIS Terminations	\$5,650.00

Cable Sensitive Kits for ATA Type Outdoor and GIS Terminations

Includes standard length connector, semi-stop, semi-stop washers and gaskets, filters and stands, skid wire clamp or ground screw, paper roll supports, and paper roll hold downs (if necessary).

If extra long connector is needed, a \$500.00 adder is to be used.

If an extra-extra long connector is required or aluminum cable is being used, consult factory for quote.

Description	List Price
69kV Cable Sensitive Kit with standard length connector for copper conductor cable	\$4,875.00
115kV/138kV/161kV Cable Sensitive Kit with standard length connector for copper conductor cable	\$5,100.00
230kV Cable Sensitive Kit with standard length connector for copper conductor cable	\$5,875.00
345kV Cable Sensitive Kit with standard length connector for copper conductor cable	\$7,625.00

Cable Sensitive Kits for ATL Type Outdoor and GIS Terminations

Includes connector, and paper roll support.

If extra long connector is needed, a \$500.00 adder is to be used.

If an extra-extra long connector is required or aluminum cable is being used, consult factory for quote.

Description	List Price
69kV Cable Sensitive Kit with standard length connector for copper conductor cable	\$1,775.00
115kV/138kV/161kV Cable Sensitive Kit with standard length connector for copper conductor cable	\$2,925.00
230kV Cable Sensitive Kit with standard length connector for copper conductor cable	\$4,250.00

Cable Sensitive Kits for ATA-NG Outdoor Type Terminations

Includes standard length connector, semi-stop, semi-stop washers and gaskets, filters and stands, skid wire clamp or ground screw, paper roll supports, and paper roll hold downs (if necessary).

If extra long connector is needed, a \$500.00 adder is to be used.

If an extra-extra long connector is required or aluminum cable is being used, consult factory for quote.

Description	List Price
115kV/138kV/161kV Cable Sensitive Kit with standard length connector for copper conductor cable	\$5,450.00

Spare Gaskets

Description	List Price
Standard Spare Gaskets for ATA 69kV Outdoor Terminations	\$300.00
Viton Spare Gaskets for ATA 69kV Outdoor Terminations	\$350.00
Standard Spare Gaskets for ATL 69kV Outdoor or GIS Terminations	\$250.00
Standard Spare Gaskets for ATA 115kV/138kV/161kV Outdoor Terminations	\$325.00
Viton Spare Gaskets for ATA 115kV/138kV/161kV Outdoor Terminations	\$425.00
Standard Spare Gaskets for ATA 115kV/138kV/161kV GIS Terminations	\$275.00
Viton Spare Gaskets for ATA 115kV/138kV/161kV GIS Terminations	\$325.00
Standard Spare Gaskets for ATL 115kV/138kV/161kV Outdoor or GIS Terminations	\$250.00
Standard Spare Gaskets for ATA-NG 115kV/138kV Outdoor Terminations	\$400.00
Viton Spare Gaskets for ATA-NG 115kV/138kV Outdoor Terminations	\$450.00
Standard Spare Gaskets for ATA 230kV Outdoor Terminations	\$350.00
Viton Spare Gaskets for ATA 230kV Outdoor Terminations	\$575.00
Standard Spare Gaskets for ATA 230kV GIS Terminations	\$325.00
Viton Spare Gaskets for ATA 230kV GIS Terminations	\$550.00
Standard Spare Gaskets for ATL 230kV Outdoor or GIS Terminations	\$250.00
Standard Spare Gaskets for ATA 345kV Outdoor Terminations	\$425.00
Viton Spare Gaskets for ATA 345kV Outdoor Terminations	\$850.00
Standard Spare Gaskets for ATA 345kV GIS Terminations	\$350.00
Viton Spare Gaskets for ATA 345kV GIS Terminations	\$575.00

Stress Cone Materials

Description	List Price
Stress Cone Materials for ATA 69kV Outdoor Terminations	\$900.00
Stress Cone Materials for ATL 69kV Outdoor or GIS Terminations	\$2,000.00
Stress Cone Materials for ATA 115kV/138kV/161kV Outdoor Terminations	\$1,200.00
Stress Cone Materials for ATA 115kV/138kV/161kV GIS Terminations	\$1,450.00
Stress Cone Materials for ATL 115kV/138kV/161kV Outdoor or GIS Terminations	\$2,000.00
Stress Cone Materials for ATA-NG 115kV/138kV Outdoor Terminations	\$2,250.00
Stress Cone Materials for ATA 230kV Outdoor Terminations	\$1,650.00
Stress Cone Materials for ATA 230kV GIS Terminations	\$1,750.00
Stress Cone Materials for ATL 230kV Outdoor or GIS Terminations	\$2,500.00
Stress Cone Materials for ATA 345kV Outdoor Terminations	\$4,150.00
Stress Cone Materials for ATA 345kV GIS Terminations	\$4,200.00